

**DIGITAL  
YACHT**

**DIGITAL  
DEEP SEA**



SAIL BOAT

SPORT FISHING

MOTOR BOAT



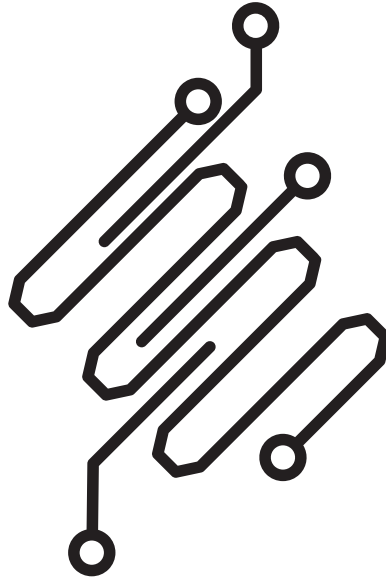
NAVAL

COMMERCIAL FISHING

COMMERCIAL SHIPPING

SUPERYACHT

WORK BOAT



# PRODUCT GUIDE 2014

**UK Market GBP / £**

Tel: 01179 554 474

[www.digitalyacht.co.uk](http://www.digitalyacht.co.uk)

Edition 1 | 2014

**AIS**

**NAVIGATION**

**WIRELESS  
NAVIGATION**

**WIRELESS  
INTERNET**

**MARINE PCs**

**SOFTWARE**

**BOAT<sub>RA</sub>NET**

**DIGITAL  
DEEP SEA**

---

**DIGITAL YACHT 2014 IS ALL ABOUT NEXT GENERATION NAVIGATION, COMMUNICATION AND ENTERTAINMENT SYSTEMS FOR YOUR BOAT. BOATING SHOULD BE FUN, SAFE AND EASY AND OUR PRODUCTS INTEGRATE INTO EXISTING AND NEW BOAT NETWORKS TO BRING A POWERFUL DIMENSION TO YOUR ON-BOARD ELECTRONICS.**

We firmly believe that low cost consumer devices such as iPhones and tablets, PCs and MACs have a place on board and can help make legacy systems compete with the latest in dedicated marine electronic products at a fraction of the cost. We make internet access whilst afloat easy and affordable as well as bringing all your navigation data to your favourite consumer devices - not just for you but for crew and guests too.

Our navigation systems cover advanced GPS and compass technology as well as the most comprehensive range of AIS products in the marketplace. Plus our PC and software solutions bring simple yet powerful solutions to a variety of on board requirements from communication to navigation, entertainment to monitoring.

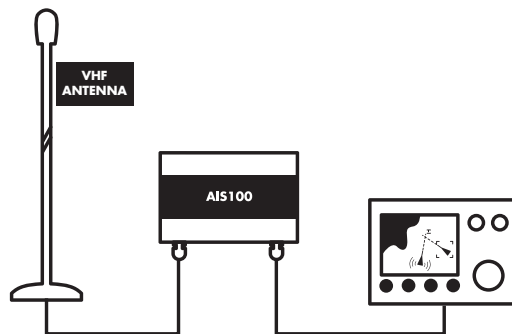
Our design team has 100's years combined experience in marine electronic systems and we take pride in our quality heritage with manufacturing in the UK and global reach with offices in the US and China. Last year our products were sold in over 100 countries worldwide.

Good Boating,



Nick Heyes

## AIS100 RECEIVER (NMEA 0183)



Typical system

“Connects to any NMEA AIS compatible chart plotter and adds an AIS overlay. Simple to install, highly sensitive dual channel design that’s easy to install with Garmin, Raymarine, Standard, Lowrance, Simrad, Furuno etc plotters”

### KEY FEATURES

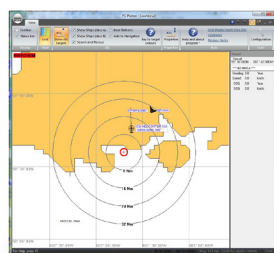
This value priced, entry level AIS receiver is Digital Yacht’s most cost effective solution for adding AIS to your boat. Featuring the same dual channel receiver as the AIS100Pro, but without the USB interface and multiplexer, there is no compromise on performance and the AIS100 will out-perform all other, inferior, single channel receivers.

For use with existing AIS compatible chart plotters, such as the latest Garmin, Raymarine, Navico, Standard Horizon and Furuno units. Typical AIS reception range is 20 – 20 m for a mast top antenna.

### SPECIFICATIONS

- Low cost entry level AIS receiver
- High performance dual-channel AIS receiver for use with existing plotter and radar systems
- High speed NMEA output (38,400 baud)
- Requires VHF antenna or dedicated AIS antenna (available as optional accessory) or splitter
- Easy to install IP54 black box solution
- BNC antenna connector

### EXTRA APPLICATIONS



All Digital Yacht systems ship with SmarterTrack Lite PC software



Use the SPL2000 VHF – AIS antenna splitter to share the vessels VHF antenna with VHF and AIS.

### DIMENSIONS

105mm x 72mm x 32mm  
(L x W x D)

### PART NUMBER

ZDIGAIS100  
**UPC**  
738435472382

### SUPPLIED WITH

Integral mounting brackets, 0.75m Power/Data cable, AIS Lite software on CD and User Manual

### PRICE

£140.00

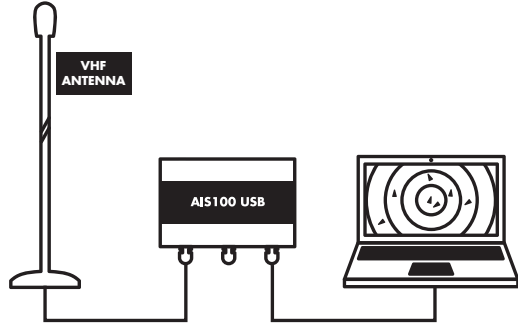


AIS



INTERFACE

## AIS100 RECEIVER (USB)



Typical system

*“Perfect for PC based navigation systems with USB drivers for PC, MAC and linux”*

### KEY FEATURES

This value priced, entry level AIS receiver is Digital Yacht’s most cost effective solution for getting AIS on your PC. Featuring the same dual channel receiver as the AIS100Pro, but without the NMEA 0183 Output and multiplexer, there is no compromise on performance and the AIS100USB will out-perform all other, inferior, single channel receivers.

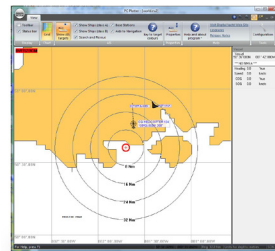
Simple plug and play USB connection to a PC. Uses standard drivers built-in to Windows XP/Vista/7 and is automatically mapped to an available “virtual” com port, which your PC software can read. Also compatible with Mac OS X and all LINUX Kernels since V2.4.20.

For use with any AIS compatible PC navigation software, such as the latest SmarterTrack, MaxSea, SeaPro, Nobeltec and Rose-Point applications.

### SPECIFICATIONS

- Low cost entry level AIS receiver
- High performance dual-channel AIS receiver for use with AIS compatible PC navigation software
- USB Interface for simple Plug and Play connection to a PC
- Requires VHF / AIS antenna or splitter
- Easy to install IP54 black box solution

### EXTRA APPLICATIONS



All Digital Yacht systems ship with SmarterTrack Lite PC software



Use the SPL2000 VHF – AIS antenna splitter to share the vessels VHF antenna with VHF and AIS.

### DIMENSIONS

105mm x 72mm x 32mm  
(L x W x D)

### PART NUMBER

ZDIGAIS100USB  
**UPC**  
738435472399

### SUPPLIED WITH

Integral mounting brackets, 0.75m Power cable, 0.75m USB cable, AIS Lite software on CD and User Manual

### PRICE

£140.00



AIS



USB



LINUX

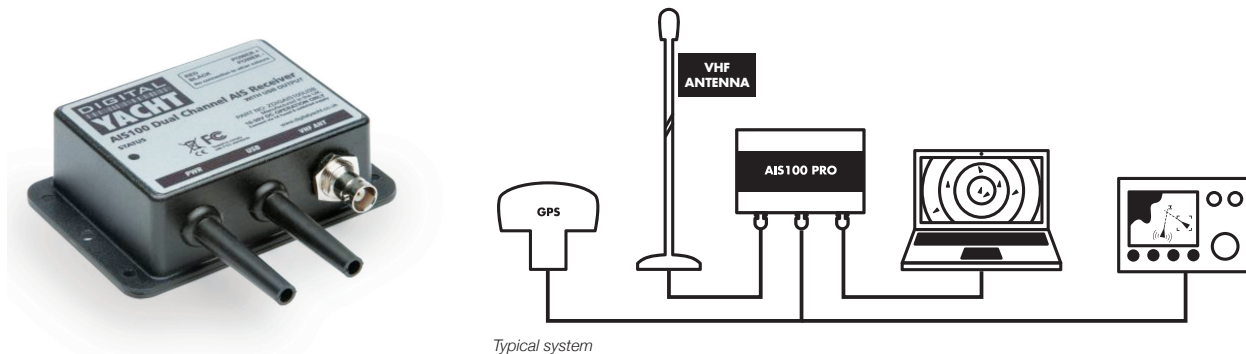


MAC



WINDOWS 8

## AIS100PRO RECEIVER (NMEA & USB)



“Combination NMEA and USB connections for PC and plotter based systems. Also features NMEA input and inbuilt multiplexer”

### KEY FEATURES

Great entry-level AIS receiver for use with PC navigation software and chart plotters, such as the latest Garmin, Raymarine, Navico, Standard Horizon and Furuno units. Connected to an existing VHF antenna (via a splitter) or dedicated AIS antenna, you can receive all AIS targets within range – typically up to 30nm. Simple plug and play USB connection to a PC. Uses standard drivers built-in to Windows XP/Vista/7 and is automatically mapped to an available “virtual” com port, which your PC software can read. Also compatible with Mac OS X and all LINUX Kernels since V2.4.20.

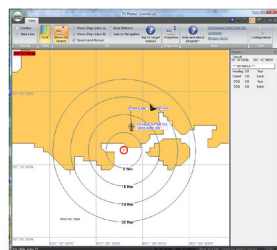
The AIS100 Pro has a dual NMEA0183 and USB output capability, allowing you to supply AIS data to a PC (via USB) and a dedicated plotter (via NMEA) for larger installations.

Connect the NMEA (4800 baud) output of your GPS to the AIS100Pro and it will automatically multiplex (merge) the slower GPS data with the high speed AIS data and transmit everything on the high speed NMEA output (38,400 baud) - perfect for connection to a chart plotter with only one NMEA input.

### SPECIFICATIONS

- High performance dual channel AIS receiver for use with existing plotter and radar systems
- USB Interface for simple plug ‘n play connection to a PC
- High Speed NMEA output (38,400 baud)
- Requires VHF antenna or dedicated AIS antenna (available as optional accessory) or splitter
- Multiplexed NMEA input for single NMEA GPS+AIS data output at 38,400 baud
- Easy to install IP54 black box solution

### EXTRA APPLICATIONS



All Digital Yacht systems ship with SmarterTrack Lite PC software



Use the SPL2000 VHF — AIS antenna splitter to share the vessels VHF antenna with VHF and AIS.

### DIMENSIONS

105mm x 72mm x 32mm  
(L x W x D)

### PART NUMBER

ZDIGAIS100P  
**UPC**  
030955183657

### SUPPLIED WITH

Integral mounting brackets, 0.75m Power/Data cable, 0.75m USB cable, AIS Lite software on CD and User Manual

### PRICE

£170.00



AIS



USB



INTERFACE



MULTIPLEXER



LINUX

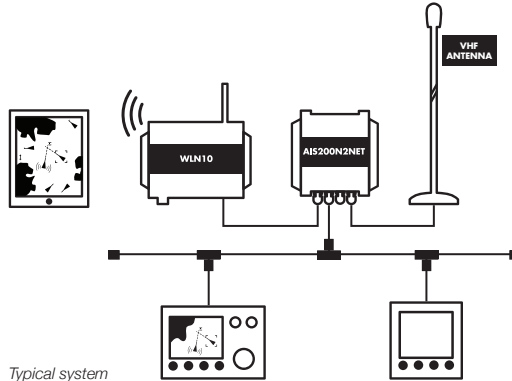


MAC



WINDOWS 8

## AIS200N2NET RECEIVER



Typical system

*“Maximum connectivity with NMEA 0183 and NMEA2000 (N2NET) interfacing as well as USB connectivity for a PC. It’s the ultimate AIS receiver. Add wireless connectivity with the optional WLAN10HS”*

### KEY FEATURES

Our top of the range AIS receiver with Tri-Output connectivity, features the very latest AIS technology, to give un-rivalled levels of reception and data through put. With easy connections to all of the latest PC navigation software and chart plotters, such as the latest Garmin, Raymarine, Navico, Standard Horizon and Furuno units, the AIS200N2NET matches and exceeds the performance of other more expensive, big brand AIS receivers.

With NMEA 2000, dual NMEA 0183 and USB outputs connection, interfacing and installation is simple and the AIS200N2NET supports all of the latest AIS message types including AIS SARTs, AtoNs and base stations.

Connected to existing VHF antenna (via a splitter) or dedicated AIS antenna, you’ll receive all AIS targets within range – typically up to 30nm. Simple plug and play USB connection to a PC, the AIS200N2NET is automatically mapped to an available “virtual” com port, which your PC software can read. Also compatible with Mac OS X and all LINUX Kernels since V2.4.20.

The AIS200N2NET has dual NMEA0183 outputs; one output

provides just AIS data, whilst the other multiplexes AIS data with whatever NMEA 0183 data it receives on the NMEA input (4800 baud). With NMEA 2000 and USB output capability, the AIS200N-2NET can provide AIS feeds to multiple equipment at the same time, great for larger more complex installations.

### SPECIFICATIONS

- Latest generation AIS Technology – featuring a brand new AIS receiver design
- Tri-Output; NMEA2000, NMEA0183 and USB PC
- High performance dual channel AIS receiver for use with existing plotter and radar systems
- Rugged IPX5 aluminium housing
- USB Interface for simple Plug and Play connection to a PC
- Two NMEA 0183 outputs (38,400 baud)
- Requires VHF antenna or dedicated AIS antenna (available as optional accessory) or splitter
- Multiplexed NMEA input for single NMEA GPS+AIS data output at 38,400 baud
- Simple “fit and forget” black box solution

### DIMENSIONS

150mm x 155mm x 37.5mm  
(L x W x D)

### PART NUMBER

ZDIGAIS200N2NET

### UPC

030955183664

### SUPPLIED WITH

0.75m Power/Data cable, 0.75m USB cable, 0.75m NMEA 2000 cable, AIS Lite software on CD

### PRICE

£250.00



AIS



USB



INTERFACE



INTERFACE



MULTIPLEXER



INTERFACE



LINUX

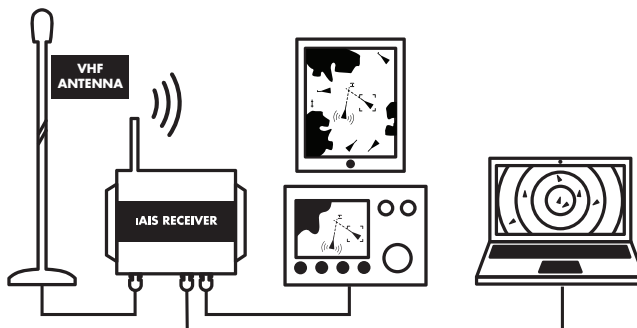


MAC



WINDOWS 8

## iAIS RECEIVER



Typical system

*“Award winning AIS receiver with wireless interface. Connect to your plotter, PC and mobile device through a wireless interface. Turns your iPhone or iPad into a full function AIS display and now also compatible with apps for Android too.”*

### KEY FEATURES

The world's first wireless AIS receiver that links wirelessly with the latest iPhone, iPad and iTouch devices. Consisting of a high performance dual channel AIS receiver, an integrated 802.11b+g wireless access point plus a free app downloadable from the Apple App Store, the iAIS brings AIS data to a whole new generation of mobile devices.

iAIS also multiplexes any other NMEA data that is available on board the boat - for instance GPS, depth, speed and wind etc. All of this data is combined with the AIS data into a single wireless feed, that becomes available on any compatible application. By using the boat's own GPS, even an iTouch or iPad that does not have an internal GPS can now be used for navigation and superior performance will also be seen on an iPhone, which some users have complained suffers from jitter or poor lock-on with its internal GPS.

As well as sending data wirelessly, the iAIS also has an NMEA0183 and USB interface so that you can output data to a PC (via USB) and a dedicated plotter (via NMEA) for larger installations.

The free iAIS app is available from the App store and is a simple AIS display program. For more advanced use, Digital Yacht recommends the iNavX app ([www.inavx.com](http://www.inavx.com)). Now supports TCP/IP and UDP connection for multiple uses.

### SPECIFICATIONS

- World's first wireless AIS and NMEA Data server
- Tri-output; WiFi, NMEA 0183 and USB
- Multiplexed NMEA input for wireless NMEA data feed of boat's instrument and GPS data
- TCP & UDP connectivity
- Free iAIS App for iPhone, iTouch or iPad
- Integrated 802.11b+g wireless access point
- Fully compatible with popular iNavX navigation application for Apple mobile devices
- Rugged IPX5 aluminium housing
- Requires VHF antenna or dedicated AIS antenna (available as optional accessory) or splitter
- Simple "fit and forget" black box solution

### DIMENSIONS

150mm x 150mm x 37.5mm  
(L x W x D)

### PART NUMBER

ZDIGiAIS  
**UPC**  
738435472375

### SUPPLIED WITH

Mounting brackets, 1m Power/Data cable, 1m USB Cable, iAIS app (from Apple App Store), software CD and User Manual

### PRICE

£350.00



AIS



USB



INTERFACE



WIRELESS



MULTIPLEXER



WINDOWS 8



LINUX



MAC



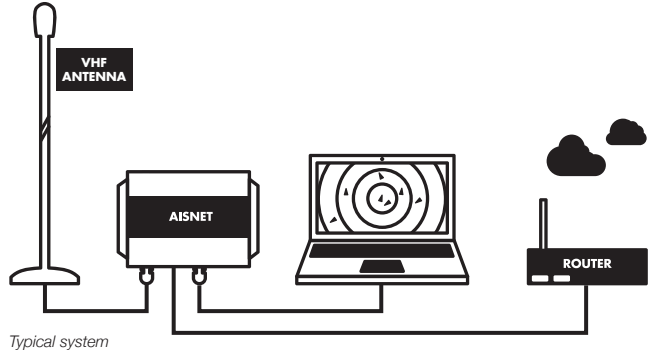
IOS



ANDROID



**AISNET INTERNET BASE STATION**



*“Network enabled AIS receiver for base station operation. Simple RJ45 network interface and USB too. Perfect for use with Marine Traffic or AIS Live”*

**KEY FEATURES**

AISnet is a new AIS base station receiver for use at home or in the office. Utilising the same high performance dual channel AIS receiver as the rest of the Digital Yacht range, AISnet also features an ethernet socket that can connect to a broadband router to send data to online AIS tracking services.

There are now a large number of internet based web sites, which offer a view of AIS equipped vessels on a background chart allowing users to check the position and identity of ships and yachts. If your home/office is close to the coast you can contribute your data to one of these sites, simply register with the company and they will give you an IP address and port number.

Using the setup program that Digital Yacht supply, it takes seconds to program the IP address and port into AISnet, which will immediately start sending your local AIS data seamlessly across the internet to be displayed on the site.

Data that AISnet is collecting, can also be viewed locally on your PC using the free SmarterTrack Lite software. Plug the USB

connector into your PC and AIS data will appear on your PC, whilst also transmitting over the internet.

AISnet is supplied with a universal UK/Euro/US mains adaptor that provides a regulated 12v supply from 240v/110v AC mains.

**SPECIFICATIONS**

- AIS base station for home or office use
- Integrated ethernet network controller for supplying AIS data to online AIS websites
- High performance dual channel AIS receiver
- Simple configuration via free setup program
- USB Interface for simple plug and play connection to a local PC
- Requires VHF antenna or dedicated AIS antenna (available as optional accessory) or splitter
- Universal Mains power supply included
- Simple “fit and forget” black box solution

**DIMENSIONS**

244mm x 150mm x 60.5mm  
(L x W x D)

**PART NUMBER**

ZDIGAISNET  
**UPC**  
738435472429

**SUPPLIED WITH**

UK/Euro/US mains adaptor, 1m  
USB Cable, AIS Lite + Setup  
software on CD and User Manual

**PRICE**

£300.00



AIS



USB



NETWORK



WINDOWS 8

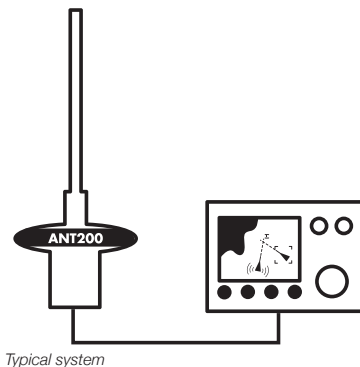


LINUX



MAC

## ANT200 RECEIVER



*“The AIS Smart Antenna – Mount ‘n connect AIS sensor with integrated antenna. Standard NMEA plotter compatible output”*

### KEY FEATURES

Perfect “all in one” AIS Smart Antenna solution for small boats, particularly RIBs, sports boats and small yachts, where dry space to mount black box AIS units is limited. Simply connect 12v or 24v power and the ANT200 will start transmitting data on all AIS targets within range of your boat – typically 10-15NM\*. Ideal for use with existing AIS compatible chart plotters, such as the latest Garmin, Raymarine, Navico, Standard Horizon and Furuno units.

Connect the NMEA0183 (4800 baud) output of your GPS to the ANT200 and it will automatically multiplex (merge) the slower GPS data with the high speed AIS data and transmit everything on one high speed NMEA output (38,400 baud) - perfect for connection to a chart plotter with only one NMEA input.

\* NOTE – similar to hand-held VHF’s, which have a reduced range compared to fixed mount VHF’s (no antenna ground plane), the ANT200 does not have the same range as the AIS100/200 black box AIS units. If maximum AIS range is your highest priority then one of the other Digital Yacht receivers should be used, but for small boats with the aerial mounted at deck level, 10 miles is a good range for AIS and the ANT200 is recommended.

### SPECIFICATIONS

- World’s first AIS smart antenna
- Multiplexed NMEA input for single NMEA GPS+AIS data output at 38,400 baud
- Simple to install “all in one” smart antenna solution
- Integral 1” x 14 TPI thread for fixing to standard VHF mounts
- 15m power/data cable
- High performance dual channel AIS receiver for use with existing plotter and radar systems
- High speed NMEA output (38,400 baud)

### DIMENSIONS

180mm x 100mm  
(H x W)

### PART NUMBER

ZDIGANT200  
**UPC**  
738435472597

### SUPPLIED WITH

15m Power/Data cable and User Manual. AIS Lite included

### PRICE

£200.00



AIS

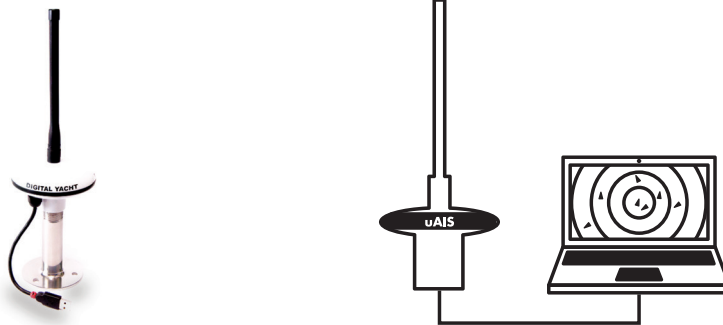


INTERFACE



MULTIPLEXER

## uAIS RECEIVER



Typical system

“Self-powered AIS sensor with integrated antenna. Connects direct to PC USB port. Ideal for charter use with PC navigation programs”

### KEY FEATURES

Perfect “all in one” AIS Smart Antenna solution for anyone using a Laptop on a small boat that wants to receive AIS data.

Simple plug and play USB connection to a PC. Uses standard drivers built-in to Windows XP/Vista/7 and is automatically mapped to an available “virtual” com port, which your PC software can read. Also compatible with Mac OS X and all LINUX Kernels since V2.4.20.

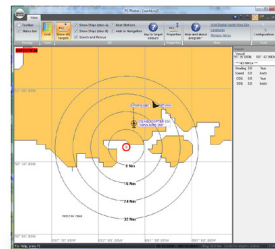
For use with any AIS compatible PC navigation software, such as the latest SmarterTrack, MaxSea, SeaPro, Nobeltec and Rose-Point applications.

\* NOTE – similar to hand-held VHF’s, which have a reduced range compared to fixed mount VHF’s (no antenna ground plane), the uAIS does not have the same range as the AIS100/200 black box AIS units. If maximum AIS range is your highest priority then one of the other Digital Yacht receivers should be used, but for small boats with the aerial mounted at deck level, 10 miles is a good range for AIS and the uAIS is recommended.

### SPECIFICATIONS

- USB powered AIS smart antenna
- Simple to install “all in one” smart antenna solution
- Integral 1” x 14 TPI thread for fixing to standard VHF mounts
- 5m USB cable
- High performance dual channel AIS receiver for use with existing plotter and radar systems
- High speed NMEA output (38,400 baud)

### EXTRA APPLICATIONS



All Digital Yacht systems ship with SmarterTrack Lite PC software

### DIMENSIONS

180mm x 100mm  
(H x W)

### PART NUMBER

ZDIGuAIS  
**UPC**  
030955183633

### SUPPLIED WITH

5m USB cable and User Manual.  
AIS Lite included

### PRICE

£200.00



AIS



USB



WINDOWS 8

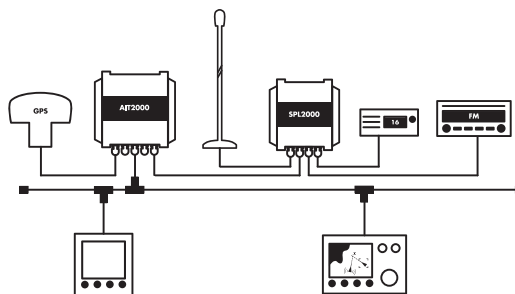
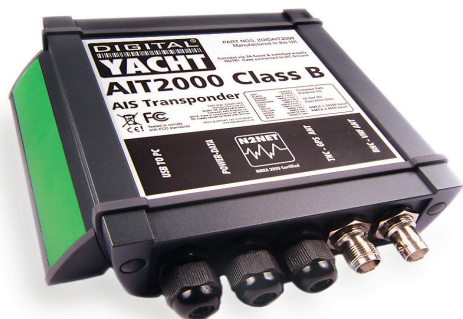


LINUX



MAC

## AIT2000 TRANSPONDER (CLASS B)



Typical system

“Great value, flexible AIS transponder solution with multiple outputs to suit every installation and optional wireless solution”

### KEY FEATURES

The AIT2000 uses the latest AIS Transponder technology to squeeze more performance and interfacing options in to a housing that is half the size of our previous generation transponder.

This ultra-compact Class B Transponder has three outputs; NMEA 0183, NMEA 2000 and USB connection, allowing it to work with every AIS compatible chart plotter or software package on the market today. Featuring a remote silence button option, two NMEA 0183 Inputs and Outputs, four status LEDs and rugged vibration-proof mounting brackets, the AIT2000 is the third generation of Digital Yacht AIS transponder and replaces the very popular AIT1000.

Configuration of your vessel’s fixed data, such as MMSI, call sign, boat name, dimensions etc. is made easy with the included Windows and Mac compatible proAIS2 software. Once configured, the unit will provide AIS data to a PC or Mac running suitable navigation software or a dedicated chart plotter, such as the latest Garmin, Raymarine, Navico, Standard Horizon and Furuno units.

As well as transmitting your own vessel’s position so that other AIS equipped vessels know where you are, the AIT2000, when connected to an existing VHF antenna (via a splitter) or dedicated

AIS antenna, will receive all AIS targets within range of your boat – typically up to 30NM

With two industry standard NMEA 0183 outputs, our own N2NET connector for plugging in to an NMEA 2000 network and a simple plug and play USB connection to a PC, the AIT2000 is the perfect AIS transponder solution for all light marine vessels up to 300 tonnes.

### SPECIFICATIONS

- Latest generation AIS technology – featuring a brand new AIS transponder (Class B) design
- Ideal for use with existing plotter and radar systems
- Built-in high performance 50 channel GPS receiver (ideal also as a backup GPS)
- USB Interface for simple plug and play connection to a PC or Mac
- Includes N2Net interface and cable for connection to NMEA 2000 network
- High speed NMEA output (38,400 baud) – compatible with industry standard plotters
- Comes complete with GPS antenna with integral 1”x14TPI thread mount
- Requires VHF antenna or dedicated AIS antenna (available as optional accessory) or splitter (SPL2000)
- Remote Silence Switch option
- Supplied with programming software for user programming\*
- Easy to install black box solution

\*Except US where dealer programming required

### DIMENSIONS

150mm x 155mm x 37.5mm  
(L x W x D)

### PART NUMBER

ZDIGAIT2000  
**UPC**  
030955183626

### SUPPLIED WITH

0.75m Power/Data cable, 0.75m  
USB cable, 0.75m N2Net cable,  
GPS Antenna

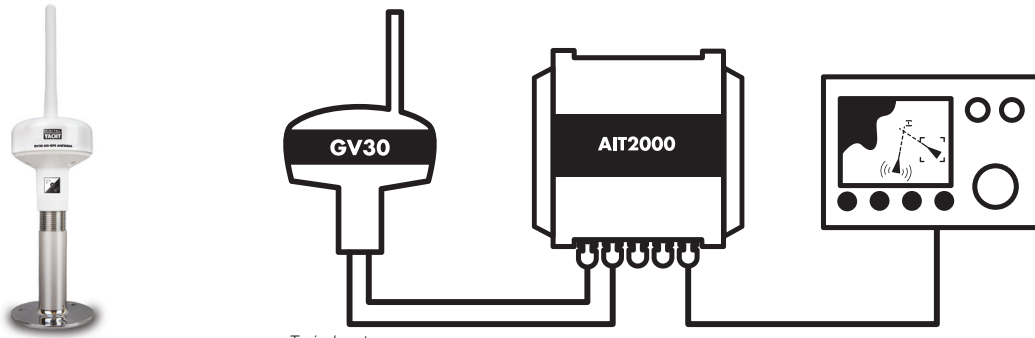
### PRICE

£450.00



## AIS SYSTEMS

## GV30 AIS VHF GPS ANTENNA



Typical system

“Combination AIS/VHF and GPS antenna for Class B transponders which makes for a super quick and high performance installation”

## KEY FEATURES

A Class B AIS transponder requires a dedicated GPS antenna (all Class B units must have their own internal GPS and can't use an external feed for regulatory purposes) as well as a VHF antenna or suitable VHF-AIS antenna splitter. The GV30 is a combination VHF/AIS and GPS antenna with twin coax feeds (10m). It's fitted with a standard 1" threaded base so will mount onto a variety of deck, pole and rail attachments available from many 3rd party suppliers.

The 10m coax cables are terminated with a FME mini connector which makes running the cable easy as the connector is barely bigger than the 5mm cable. We then supply suitable adaptors for the TNC and BNC connectors on our AIT2000.

The GV30 is just 190mm high and 75mm in diameter. Despite its compact dimensions, it offers very good performance as its specifically tuned to 162MHz (AIS frequency). The GV30 is also available with the AIT2000 as a bundle

## SPECIFICATIONS

- Combination AIS/VHF and GPS antenna
- Specifically tuned to 162MHz
- High gain GPS element
- Supplied with 2 x 10m cable tails fitted with mini connectors for easy cable installation
- Standard 1" threaded base for compatibility with a variety of 3rd party mounts
- Supplied with TNC (GPS) and BNC (AIS) adaptors
- Under 200mm high for low profile installation

## DIMENSIONS

75MM X 190MM  
(L x H)

## PART NUMBER

ZDIGGV30  
**UPC**  
081159830076

## SUPPLIED WITH

Supplied with user manual, 10m cables, TNC adaptor and BNC adaptor

*Note: not supplied with base*

## PRICE

£85.00



AIS

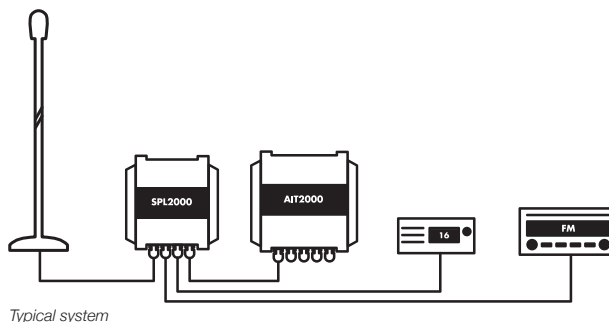


RADIO



GPS

## SPL2000 VHF-AIS ANTENNA SPLITTER



*“Patented zero loss technology lets you share your main VHF antenna with both the VHF and AIS. Compatible with transponders and receivers”*

### KEY FEATURES

An AIS receiver or transponder requires a VHF antenna, but Digital Yacht’s new SPL2000 AIS-VHF antenna splitter allows an existing antenna to be used for both the AIS and VHF (DSC) and even with an AM/FM radio. Unlike most simple splitters, it can also be used with a class B transponder system and it incorporates special circuitry to ensure safe operation of the two transmitting devices. The unit has four simple connections - one input for the main VHF antenna and then outputs for the AIS receiver/transponder, DSC VHF as well as an optional car radio output. It utilises Digital Yacht’s new, patented, ZeroLoss™ technology, to ensure the very best possible reception and transmission from all devices. Most importantly it is also fail safe, so should the unit ever stop working or lose power, it will not affect the main VHF operation.

Until now, Digital Yacht, have recommended a dedicated antenna for a receiver or transponder. However, with the new this new ZeroLoss™ technology, we can now offer a solution that greatly simplifies installation whilst maintaining performance.

The unit is waterproof and matches the aesthetics of the current range of transponders and receivers, so can easily be integrated into any vessel. It is suitable for operation on 12V or 24V systems and features three status LEDs that show the unit is powered correctly and when the AIS or VHF transmits.

### SPECIFICATIONS

- Enables an existing VHF antenna to be used for both the standard VHF and AIS system
- Patented ZeroLoss™ technology for exceptional performance
- Works with all Class B transponders and receivers
- Supplied with power cable, PL259-PL259 cable assembly and BNC-BNC cable assembly for easy installation (all cables 0.75m long)
- AM-FM radio antenna connection for standard car stereo radio (integrated in power cable)
- 12v or 24v Operation and low power consumption
- Fail safe operation
- Same size and design as the new AIT2000
- Makes installation of an AIS receiver or transponder very quick and simple
- Saves on additional antenna clutter

### DIMENSIONS

150mm x 155mm x 37.5mm  
(L x W x D)

### PART NUMBER

ZDIGSPL2000  
**UPC**  
030955183756

### SUPPLIED WITH

0.75m PL259 and BNC Coax interconnect cables, 0.75m power lead, integral fixing brackets and manual

### PRICE

£215.00

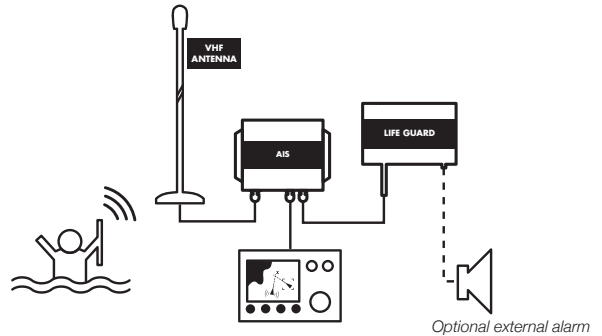


AIS



RADIO

## AIS LIFE GUARD (AIS MAN OVERBOARD ALARM)



Typical system

*“AIS SART Alarm — Connects to any of our AIS devices and detects a SART target — ideal for use as a MOB system with personal SARTs”*

### KEY FEATURES

The AIS Life Guard is the world’s first AIS Man Overboard Alarm designed to work with the new generation of AIS SARTs that have recently been approved for global use by the IMO. Many existing AIS compatible chart plotters do not fully support AIS SARTs but with the AIS Life Guard connected to an AIS transponder or AIS receiver, you can have a complete working AIS SART man overboard system. Operation is automatic, simply connect the two wire NMEA input on the AIS Life Guard to the NMEA output of your AIS and it will listen to all AIS traffic.

As soon as an AIS SART transmission is detected the AIS Life Guard will sound its internal 95dB alarm and display a red warning light. For larger installations, it can also be connected to an external alarm (not supplied) so that the whole boat is immediately alerted.

The AIS Life Guard detects both message 1 and message 14, the two AIS messages reserved for AIS SARTs and will also give a short three beep alarm if it detects an AIS SART test message, great for checking correct operation of your AIS SARTs prior to a voyage.

All Digital Yacht AIS receivers and transponders are compatible with the AIS Life Guard and it is designed to operate on 12v or 24v DC systems.

### SPECIFICATIONS

- World’s first dedicated AIS Man Overboard Alarm system
- Listens to AIS data on NMEA0183 Input
- Alarms when AIS SART message 1 and 14 are detected
- Internal 95dB buzzer with option to drive external alarm (not supplied)
- Audible and Visual Alarms
- Push button to silence alarm (short press) and reset alarm (long press)
- Easy to install IP54 black box solution

### DIMENSIONS

150mm x 155mm x 37.5mm  
(L x W x D)

### PART NUMBER

ZDIGAISLG  
**UPC**  
30955183718

### SUPPLIED WITH

0.75m Power/Data cable and User Manual

### PRICE

£200.00



AIS



SAFETY



INTERFACE

# AIS SYSTEMS SPECIFICATIONS

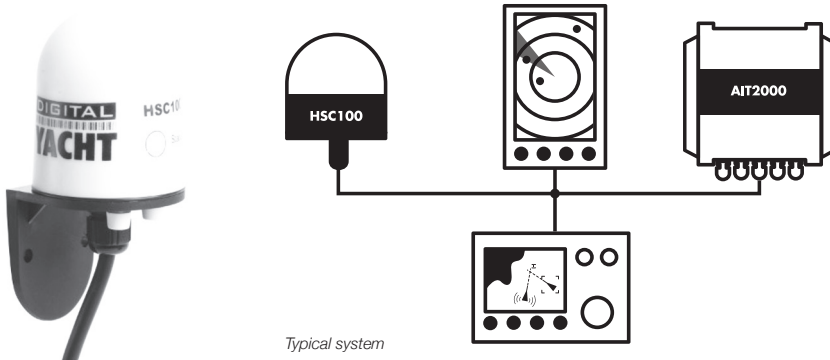


	AIS100	AIS100 USB	AIS100 PRO	AIS200 N2NET	ANT200	uAIS	iAIS	AISNET
<b>KEY FEATURES</b>	Value priced AIS receiver with NMEA 0183 38400 baud industry standard output	Value priced AIS receiver with USB PC/MAC connection. Requires separate DC power	AIS Receiver with dual USB and NMEA (38400 baud) output. NMEA Input with multiplex capability too	Offers AIS functionality plus NMEA 0183 multiplex facility, N2K output and PC USB connection	Self contained AIS "Smart" antenna with NMEA 0183 38400 baud output and NMEA input multiplex capability	Self contained AIS "Smart" antenna with USB connection for power and data. Ideal for use on PC navigation systems	Combination AIS receiver and NMEA multiplexer for iPhone/ Pad products with wifi and traditional data outputs	Shore side network receiver for use as AIS feed to internet tracking sites and other network applications
<b>DUAL CHANNEL RECEIVER</b>	●	●	●	●	●	●	●	●
<b>RECEIVER FREQUENCY</b>	161.975 MHZ 162.025 MHZ	161.975 MHZ 162.025 MHZ	161.975 MHZ 162.025 MHZ	161.975 MHZ 162.025 MHZ	161.975 MHZ 162.025 MHZ	161.975 MHZ 162.025 MHZ	161.975 MHZ 162.025 MHZ	161.975 MHZ 162.025 MHZ
<b>RECEIVER SENSITIVITY</b>	<-107dBm at 20% PER	<-107dBm at 20% PER	<-107dBm at 20% PER	<-107dBm at 20% PER	<-107dBm at 20% PER	<-107dBm at 20% PER	<-107dBm at 20% PER	<-107dBm at 20% PER
<b>NMEA 0183 38400 BAUD OUTPUT</b>	●		●	Two	●		●	
<b>USB PC CONNECTION</b>		●	●	●		●	●	●
<b>N2NET/NMEA 2000 OUTPUT</b>				●				
<b>ETHERNET OUTPUT VIA RJ45</b>								●
<b>WIFI OUTPUT</b>	Optional with WLN10HS		Optional with WLN10HS	Optional with WLN10HS	Optional with WLN10HS		●	
<b>WIFI RANGE TYP</b>							30-100m max	
<b>N° OF WIFI USERS</b>							Five	
<b>NMEA INPUT MULTIPLEX</b>			●	Two	●		●	
<b>PC SOFTWARE</b>	●	●	●	●	●	●	●	●
<b>POWER REQUIREMENT</b>	12/24V	12/24V	12/24V	12/24V	12/24V	USB from PC/ MAC	12/24V	12/24V DC. AC 110/220 V ADAPTOR SUPPLIED
<b>POWER DRAW (TYPICAL MAX 12V)</b>	90mA	90mA	90mA	80mA	90mA	90mA	250mA	250mA
<b>VHF ANTENNA REQUIRED *</b>	●	●	●	●			●	●
<b>PROTECTION</b>	IPX4	IPX4	IPX4	IPX5	IPX7	IPX7	IPX5	IPX0
<b>ANTENNA CONNECTION</b>	BNC (F)	BNC (F)	BNC (F)	BNC (F)	N/A	N/A	BNC (F)	BNC (F)
<b>DIMENSIONS</b>	75x105x32mm (HxWxD)	75x105x32mm (HxWxD)	75x105x32mm (HxWxD)	152x 152x 152mm (HxWxD)	180x100mm (HxDia)	180x100mm (HxDia)	150x150x 38mm (HxWxD)	150x244x 61mm (HxWxD)

\* or compatible AIS VHF splitter



## HSC100 COMPASS SENSOR



Typical system

The HSC100 will provide a 10Hz fast heading output for AIS, MARPA, radar course up/north up and chart plotter applications

*“Fluxgate compass with auto calibration and fast heading output for MARPA or course up radar stabilisation”*

### KEY FEATURES

Accurate compass heading data remains a fundamental parameter for marine navigation and the HSC100 uses fluxgate technology to deliver heading data for on board systems. Typical applications include enabling course up and true motion type displays on chart plotters, radar overlay onto electronic charts and stabilisation of radars when used for MARPA/ARPA target tracking. Integrated instrument systems can also benefit from having compass information to calculate real time tidal set and drift when interfaced with a log and GPS.

Most low cost heading sensors only output data at 1Hz (once per second) but the HSC100 outputs at 10Hz which is required for MARPA target tracking and accurate radar overlays (Part # ZDIGHSC100).

We have also released a new “Rate of Turn” version of the HSC100 that outputs the HDT and ROT messages required by a Class A transponder. For non-mandatory vessels, this provides a simple low cost solution for adding heading and rate of turn to Class A transponders (Part # ZDIGHSC100T)

The HSC100 is waterproof (to IPx7) so can be mounted externally on steel hulled vessels. It also features an automatic calibration routine to compensate for the effects of nearby magnetic influences. This involves turning the boat through 1.5 circles at a constant angular velocity whilst in calibration mode. Once completed, typical accuracies are within 0.5 degrees.

### SPECIFICATIONS

- High Speed (10HZ) NMEA electronic fluxgate compass sensor
- Ideal for use with radar overlay and MARPA target tracking systems
- Industry standard NMEA 0183 “HDG” output
- Gimballed to 45°
- New “Rate of Turn” version of the HSC100 now released for Class A transponders (HSC100T)
- 12/24v DC operation with minimal power consumption
- Waterproof to IPx7 and suitable for external mounting on a steel hulled vessels
- Automatic calibration routine and manual compass offset feature
- Additional AD10 heading output for interface to Furuno systems
- LED Status Indicator
- 15m interconnect cable

### DIMENSIONS

68mm x 30mm  
(W x H)

### PART NUMBER

ZDIGHSC100  
ZDIGHSC100T

### UPC

030955183688  
030955183763

### SUPPLIED WITH

15m Cable and manual

### PRICE

£225.00

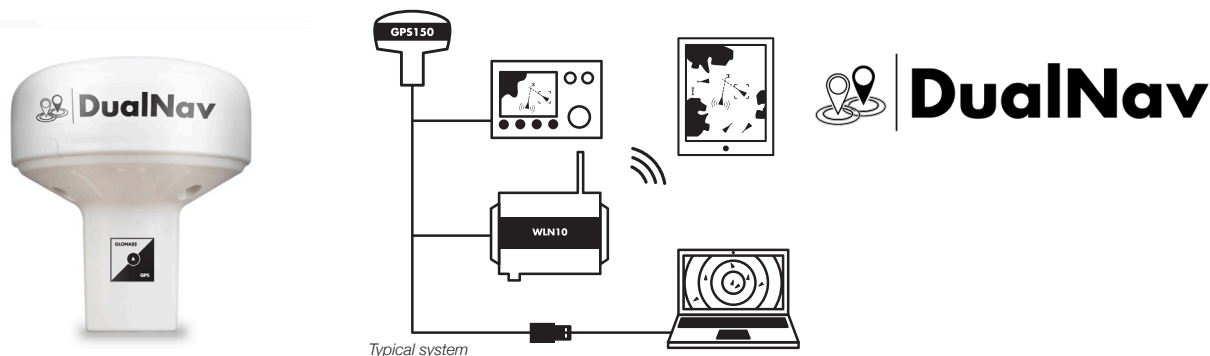


COMPASS



INTERFACE

## GPS150 DUALNAV™ GPS/GLONASS SENSOR



*“DualNav technology offers unprecedented positioning accuracy with GPS and GLONASS compatibility and 10Hz super-fast NMEA position updates”*

### KEY FEATURES

The GPS150 DualNav™ positioning sensor combines a super accurate 50 channel GPS with GLONASS, the Russian funded satellite positioning system that is now on line and providing an excellent back up or alternative to GPS. This “smart” sensor will automatically switch between the systems or the user can manually select the most appropriate for their activity. In DualNav mode, a sophisticated algorithm combines GPS and GLONASS data to offer sub 1m accuracy. The GPS150 will also be able to utilise the European funded Galileo positioning system when it comes on line (IOC – Initial Operation Capability in 2018).

The implementation of GLONASS as an additional satellite positioning system is probably the biggest step change in maritime navigation since GPS was fully augmented back in the mid 90’s. Digital Yacht’s GPS150 utilises the industry standard NMEA data format allowing older chart plotters as well as current generation products to take advantage of this new technology.

The GPS150 also allows the user to select a variety of different NMEA baud rates (4800, 38400 and 115200) to allow interfacing with legacy and current systems. It also supports a new TurboNav™ mode which will appeal to racing yachtsmen and performance users where GPS/GLONASS data is output at 10Hz (10 x faster update than normal) and with an interface speed of 115200 baud which is 24 x the speed of normal NMEA data. This massively improves slow speed navigation data as well as providing the best course and speed data in a dynamic situation.

The GPS150 houses all the electronics in its compact 75mm antenna and has a single multi core cable for power and data.

Power consumption is just 30mA at 12V. It can be used as a simple positioning sensor for plotter or VHF DSC systems as well as a precision, high speed sensor for performance sailing/super yachts. Setup is easy with a block of simple internal switches setting the characteristics of the unit. This allows the device to be programmed in the field without specialist software or programming tools.

The GPS150 can also connect to the WLN10 wireless interface to allow data to be sent to mobile devices such as iPhones, iPads and Tablets. There is also a USB interface for PC and MAC users (ZDIGUSBNMEA).

### SPECIFICATIONS

- 50 channel precision GPS/GLONASS positioning sensor
- Just 75mm in diameter and designed to fit industry standard 1” mounts
- Ultra tough, waterproof construction
- NMEA output configurable for 4800, 38400 and 115200 baud
- Selectable update rates from 1 to 10Hz
- Configurable in the field using simple DIP switches inside the antenna
- TurboNav mode offers super fast updates to optimise positioning information in slow and high speed applications
- WAAS/EGNOS/SBAS enabled for sub 1m accuracy
- User selectable GPS/GLONASS mode or auto selection
- Ultra low 30mA power consumption (at 12V DC)
- 5-30V DC power input

*The installer can set the characteristics of the GPS150 such as mode, NMEA data output and update rate using a series of simple internal DIP switches - no complicated software to upload.*





## DualNav

### GPS AND NOW GLONASS

Knowing your position whilst at sea is key to safe navigation. What we now take for granted, was extremely difficult, time consuming and inaccurate. Then, in the latter half of the 20th century, came the electronic positioning systems – Decca, Loran, Transit and in the 1990s, the global positioning system, GPS. Over 20 years have passed since the first GPS receivers were commercially available and in this time the whole world has come to rely on this US funded technology. Now every boat, plane, car and train that we travel on has GPS navigation and even your smart phone can give a GPS position accurate to within 10m, anywhere in the world, at the touch of a button.

Much political discussion has taken place over our reliance on GPS technology, to the point where both Europe (Galileo) and China (Compass) are developing their own satellite based navigation systems, which are scheduled to be fully operational by 2020. However, whilst GPS was being developed in the 1980s, there was another competitive system developed in Russia called GLONASS. This system was very much overshadowed by the American GPS system and due to the secrecy surrounding the technology and the difficulties for non-Russian companies to license this technology, it never achieved wide spread commercial use outside of Russia and surrounding countries.

During Russia's difficult financial period between 1989-1999, government spending on their space program was cut by 80% and launching of new GLONASS satellites stopped. With relatively short life spans the GLONASS satellites soon started to fail and by 2001 there were only 6 satellites still operational and the GLONASS service effectively ceased.

Most observers at the time thought this would be the death of GLONASS but in 2000, with the Russian economy recovering, President Vladimir Putin took a special interest in GLONASS and made the restoration of this service a high priority. Between 2002-2011, a large investment was made and at the end of 2011 GLONASS was fully restored and now offers worldwide coverage (with 24 operational satellites) and accuracy almost as good as GPS. In areas of

high Latitudes (North and South) GLONASS is more accurate than GPS due to the orbital position of the satellites.

### DUALNAV™ – NEW TECHNOLOGY

Now with the GPS150 DualNav™ technology, boat owners can have a single sensor that will automatically read satellite data from both GPS and GLONASS constellations, choosing the best signals from over 50 satellites. Wherever you are in the world you now have twice the satellites to choose from resulting in the GPS150 receiver having much better coverage, time to first fix and positional accuracy. Add to this the new high sensitivity receiver design, selectable baud rate and 10Hz position update rate and you have a GPS receiver that is significantly better than every previous marine GPS receiver on the market.

The new performance is particularly noticeable if the receiver is mounted below deck/inside the wheelhouse where the high sensitivity receiver still gives a good position fix or when there are obstructions blocking the view of the sky, such as a wet sail shadowing the antenna or when sailing in rivers or close to cliffs, plus DualNav™ technology with more satellites to choose from, gives a much more accurate fix.

On larger boats, it is now possible to have two completely separate position sources, not just two GPS units but two different positioning systems so that you can compare and validate your actual position. Set one GPS150 to GPS mode and another GPS150 to GLONASS mode and you have dual redundancy and two independent positioning systems.

The GPS150 also supports SBAS (Satellite-Based Augmentation System) which is the generic name given to the differential signal transmitted by various local geo-stationary satellites. SBAS allows the GPS150 receiver to remove errors in the position due to environmental conditions and improves accuracy down to <1m. Using WAAS in the US and EGNOS in Europe the GPS150 will automatically switch to differential SBAS mode when available.

#### DIMENSIONS

75mm  
(D)

#### PART NUMBER

ZDIGGPS150  
**UPC**  
081159830014

#### SUPPLIED WITH

Supplied with User manual and a  
10m cable

#### PRICE

£125.00



INTERFACE



GPS



GLONASS



AUTO GNSS



MANUAL GNSS

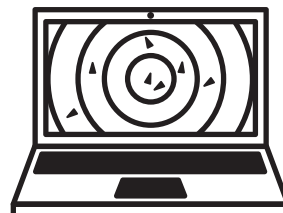
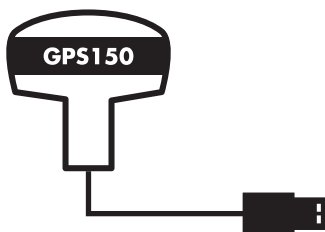


10Hz UPDATE



TURBONAV

## GPS150USB DUALNAV™ GPS/GLONASS SENSOR



Typical system

*“DualNav technology offers unprecedented positioning accuracy with GPS and GLONASS from this USB smart antenna”*

### KEY FEATURES

The GPS150USB DualNav™ positioning sensor combines a super accurate 50 channel GPS with GLONASS, the Russian funded satellite positioning system that is now on line and providing an excellent back up or alternative to GPS. This “smart” sensor will automatically switch between the systems or the user can manually select the most appropriate for their activity. In DualNav mode, a sophisticated algorithm combines GPS and GLONASS data to offer sub 1m accuracy. It's designed to connect to a PC or MAC (an even LINUX system) via a USB connection. It also derives power via the USB cable so it's completely self contained an ideal for use on charter boats with a notebook PC charting system. The GPS150USB will also be able to utilise the European funded Galileo positioning system when it comes on line (IOC – Initial Operation Capability in 2018). Digital Yacht's GPS150USB utilises the industry standard NMEA data format and the USB connection creates a virtual COM port on the PC or MAC which is easily usable by all common marine charting programs such as MaxSea, SmarterTrack, SeaPro, Rosepoint, Nobeltec, Maptech, Expedition, Imray etc.

The GPS150USB also allows the user to select a variety of different NMEA baud rates (4800, 38400 and 115200) to allow interfacing

with legacy and current PC systems. It also supports a new TurboNav™ mode which will appeal to racing yachtsmen and performance users where GPS/GLONASS data is output at 10Hz (10 x faster update than normal) and with an interface speed of 115200 baud which is 24 x the speed of normal NMEA data. The GPS150USB houses all the electronics in its compact 75mm antenna and has a single 5m USB cable for power and data. Power consumption is minimal via the USB connection. Setup is easy with a block of simple internal switches setting the characteristics of the unit. This allows the device to be programmed in the field without specialist software or programming tools.

### SPECIFICATIONS

- Self-powered via 5m USB cable
- 50 channel precision GPS/GLONASS positioning sensor
- Works with all popular PC/MAC/LINUX charting programs
- Ultra tough, waterproof construction
- NMEA output (via USB) configurable for 4800, 38400 and 115200 baud
- Selectable update rates from 1 to 10Hz
- Configurable in the field using simple DIP switches inside the antenna
- TurboNav mode offers super fast updates to optimise positioning information in slow and high speed applications
- WAAS/EGNOS/SBAS enabled for sub 1m accuracy
- User selectable GPS/GLONASS mode or auto selection

### DIMENSIONS

75mm  
(D)

### PART NUMBER

ZDIGGPS150USB  
**UPC**  
081159830113

### SUPPLIED WITH

Supplied with user manual, 5m cable and CD

### PRICE

£165.00



GPS



GLONASS



AUTO GNSS



MANUAL GNSS



10Hz UPDATE

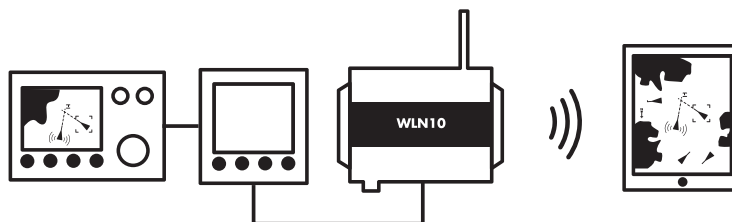


TURBO NAV



USB

## WLN10 WIRELESS NMEA SERVER (4800 BAUD)



Typical system

“Create a wifi network on your boat with NMEA data available for iPhones, iPad or Android tablets — and PCs and MACS too. Turn you mobile device into a full featured navigator with access to all your boat’s NMEA data”

### KEY FEATURES

This innovative and cost effective wireless device creates its own 802.11b+g wireless access point which any other wireless device can connect to, such as a Smart Phone, Netbook or Laptop. Connect it to any device or system that has an NMEA 0183 output and it will automatically read the data and transmit it wirelessly to another wireless device. The NMEA 0183 data is transferred using TCP/UDP protocol to a suitably compatible application on the wireless device.

A number of Marine Navigation software packages support TCP/UDP data transfer including;

- SmarterTrack (PC)
- SeaPro (PC)
- Rose Point Coastal Explorer (PC)
- MaxSea (PC) and Nobeltec (PC)
- MacENC (Macs)
- iNavX (iPhone/iPad)
- Nav Apps: iSailor and iRegatta

### SPECIFICATIONS

- Wireless NMEA Data server (4800 baud)
- Reads NMEA 0183 data and transmits it wirelessly over 802.11b+g
- Can be fitted to any GPS or Instrument system that is outputting/inputting NMEA 0183 data at 4800 baud
- Supports Bi-Directional communication but must be at the same 4800 baud rate
- Creates an 802.11b+g wireless access point and then transmits data via TCP/UDP link
- TCP allows single device connection while UDP allows multiple devices to receive the data
- Fully compatible with popular iNavX navigation application for Apple mobile devices
- Easy to install IP54 black box solution

### EXTRA APPLICATIONS



Visit the App Store to see the range.

### DIMENSIONS

105mm x 72mm x 32mm  
(L x W x D)

### PART NUMBER

ZDIGWLN10  
**UPC**  
738435472580

### SUPPLIED WITH

1m Power/Data cable, Wifi Antenna  
and User Manual

### PRICE

£200.00

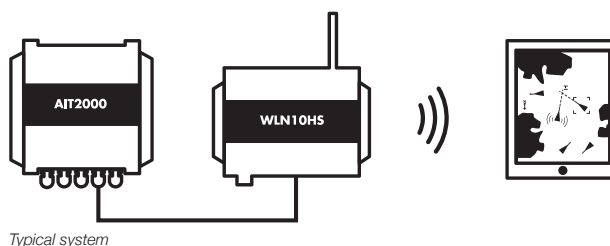


WIRELESS



INTERFACE

## WLN10HS WIRELESS NMEA SERVER (38400 BAUD)



“Create a wifi network on your boat with NMEA data available for iPhones, iPad or Android tablets — and PCs and MACS too. Turn you mobile device into a full featured navigator with access to all your boat’s AIS data — the WLN10HS is preset to 38400 baud for AIS information”

If you are connecting the WLN10HS to an AIS receiver or transponder, then Digital Yacht’s free iAIS app is downloadable from the Apple App Store, which will display an AIS radar type picture on your Apple device.

### KEY FEATURES

This innovative and cost effective wireless device creates its own 802.11b+g wireless access point which any other wireless device can connect to, such as a Smart Phone, Netbook or Laptop. Connect it to any device or system that has an NMEA 0183 output and it will automatically read the data and transmit it wirelessly to another wireless device. The NMEA 0183 data is transferred using TCP/UDP protocol to a suitably compatible application on the wireless device.

A number of Marine Navigation software packages support TCP/UDP data transfer including;

- SmarterTrack (PC)
- SeaPro (PC)
- Rose Point Coastal Explorer (PC)
- MaxSea (PC) and Nobeltec (PC)
- MacENC (Macs)
- iNavX (iPhone/iPad)
- Nav Apps: iSailor and iRegatta

### SPECIFICATIONS

- High Speed Wireless NMEA Data server
- (38400 baud)
- Reads NMEA 0183 data and transmits it wirelessly over 802.11b+g
- Can be fitted to an AIS unit or NMEA Multiplexer that is outputting/inputting NMEA 0183 data at 38400 baud
- Supports Bi-Directional communication but must be at the same 38400 baud rate
- Free iAIS App for iPhone, iTouch or iPad
- Creates an 802.11b+g wireless access point and then transmits data via TCP/UDP link
- TCP allows single device connection while UDP allows multiple devices to receive the data
- Fully compatible with popular iNavX navigation application for Apple mobile devices
- Easy to install IP54 black box solution

### DIMENSIONS

105mm x 72mm x 32mm  
(L x W x D)

### PART NUMBER

ZDIGWLN10HS  
**UPC**  
738435472610

### SUPPLIED WITH

1m Power/Data cable, Wifi Antenna  
and User Manual

### PRICE

£200.00



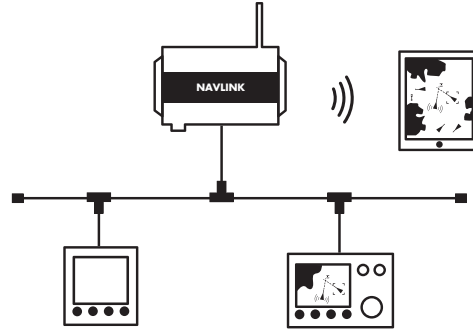
WIRELESS



INTERFACE

# NMEA TO WIFI SERVER

## NAVLINK WIRELESS NMEA2000 SERVER



Typical system

“Get data from your NMEA2000 network to a iPad, iPhone or other tablet with the Navlink NMEA2000 wireless server”

### KEY FEATURES

With more and more equipment now using NMEA 2000 networking, being able to easily connect the network data to mobile devices such as smart phones, tablets and laptops is becoming an important consideration.

The WLN2Net is a simple and cost effective wireless device that converts NMEA2000 data into a wireless data feed that can be received by any mobile wireless device. Using standard NMEA data formats, the WLN2Net is compatible with all software applications that support TCP (single device) or UDP (multiple devices) data transfer.

A number of Marine Navigation software packages support TCP/UDP data transfer including;

- SmarterTrack (PC)
- SeaPro (PC)
- Rose Point Coastal Explorer (PC)
- MaxSea (PC) and Nobeltec (PC)
- MacENC (Macs)
- iNavX (iPhone/iPad)
- Nav Apps: iSailor and iRegatta

### KEY FEATURES

- NMEA 2000 Certified Wireless Data server
- Reads NMEA 2000 data and transmits it wirelessly over 802.11b+g
- Can be fitted to any NMEA 2000 network with integral cable (male micro connector)
- Supports Bi-Directional communication for driving an Autopilot
- Uses standard NMEA data for maximum compatibility with software applications
- Creates a wireless access point and then transmits data via TCP/UDP link
- TCP allows single device connection while UDP allows multiple devices to receive the data
- Single plug 'n play connection to the NMEA2000 network, provides power and data
- Optional USB connection (ZPIEWLN2NETPL) available for providing NMEA2000 data to the boat's nav computer
- Fully compatible with popular iNavX navigation application for Apple mobile devices
- Easy to install IP54 black box solution

### DIMENSIONS

105mm x 72mm x 32mm  
(L x W x D)

### SUPPLIED WITH

1m Power/Data cable, Wifi Antenna  
User Manual and CD



WIRELESS



INTERFACE



INTERFACE



USB

### PART NUMBER

ZDIGWLN2NET  
ZDIGWLN2NETPL

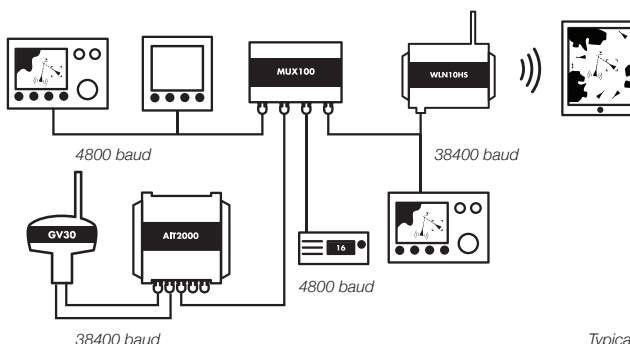
### UPC

030955183817  
030955183848

### PRICE

£350.00  
£400.00

## MUX100 NMEA MULTIPLEXER



Typical system

*“The MUX100 multiplexer combines two channels of NMEA 0183 data and makes NMEA 0183 system integration and interfacing easy.”*

### KEY FEATURES

With modern AIS receivers and transponders outputting high speed NMEA0183 data at 38400 baud, it is often difficult to connect AIS data and low speed GPS or instrument data at 4800 baud to some chart plotters and/or PCs that have just one NMEA 0183 input. With the MUX100, all data received on the two input ports is multiplexed and transmitted on output 1 at 38400 baud. It is pre-configured so that Input 1 accepts AIS data at 38400 baud and input 2 accepts GPS/instrument data at 4800 baud.

Often low speed GPS data is required to give position information to a DSC VHF, but when an AIS transponder is fitted the GPS data is often only available at 38400 baud which will be ignored by the VHF. The MUX100 intelligently takes the GPS data from the AIS present on input 1 and re-transmits this on output 2 at 4800 baud – which can then be connected to the VHF. As a safety feature, should GPS data on input 1 be invalid or lost, the MUX100 will automatically switch to the GPS data on input 2 and transmit this on output 1 and output 2. To avoid duplicated data confusing other equipment, the MUX100 automatically blocks duplicated data on port 2.

Using intelligent priority switching, the MUX100 gives priority to input 1 but if GPS data is invalid or lost on input 1, it will automatically switch to input 2. When valid position data is received again on input 1, it will automatically revert.

Two LEDs on the face of the unit give indication of the data status, with a solid LED showing which port is currently providing GPS position and a flashing light on the other port to show that data is being received. If either LED is not lit or flashing it indicates no NMEA data present.

### SPECIFICATIONS

- Dual input/output NMEA0183 multiplexer – simplifies NMEA integration and installation
- Accepts 38400 baud data on input 1 and 4800 baud data on input 2
- Combines all received data and transmits this data on output 1 at 38400 baud
- Extracts the GPS data from the high speed input 1 and re-transmits at low speed on output 2
- Important safety feature - gives priority to GPS on input 1 but switches to input 2 if position lost on input 1. Will switch back to input 1 when valid position fix data is received again
- Easy to install IP54 black box solution
- Opto isolated inputs and true NMEA differential output capable of driving several devices

### DIMENSIONS

105mm x 72mm x 32mm  
(L x W x D)

### PART NUMBER

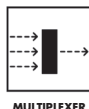
ZDIGMUX100  
**UPC**  
081159830120

### SUPPLIED WITH

Integral mounting brackets, 0.75m  
Power/Data cable and User Manual

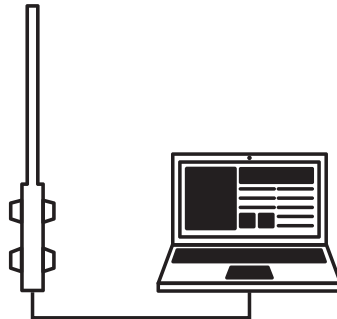
### PRICE

£100.00





## WL60 WI-FI BOOSTER



Typical system

*“Just missing that network connection – the WL60 has a 300mW modem which allows connection in those remote spots. Ships with easy USB connection cable and sucker cup mounting solution”*

### KEY FEATURES

This compact all-in-one system features a 300mW modem built in to a hi-gain (8dBm) antenna with a 5m (16ft) USB cable. The antenna measures 60cm (2ft) and should boost your Wi-Fi range to over 1.0 mile in perfect conditions.

Designed for quick and easy installation with four suction cups, the WL50 is an ideal temporary mount Wi-Fi solution for boats, caravans, RVs etc.

The WL60 connects to an on board PC through a regular USB connection with a plug ‘n’ play driver disk supplied for Windows XP/Vista/7 and Mac OS X 10.3 (and higher) operating systems. It supports 802.11b/g/n protocols as well as WEP and WPA/WPA2 encryption.

Even if your system already has Wi-Fi access, this can be disabled and you can take advantage of the superior range (and speed) that this system will offer.

Wi-Fi range depends on many local factors, but Digital Yacht has seen ranges of up to 1 km with this low cost system. In general, using an internal Wi-Fi adaptor typically found on a notebook, you’ll be lucky to find the signal at the end of the dock, so if you plan to access the internet whilst on board, the WL60 could be the solution for you.

### SPECIFICATIONS

- New 802.11n 300mW Wi-Fi modem
- High gain (8dBm) omni-directional antenna
- 4 x suction cup mount
- USB bus powered
- Windows XP/Vista/7/8 compatible
- Compatible with Mac OSX, including the latest 64bit Mountain Lion

### DIMENSIONS

580mm  
(H)

### PART NUMBER

ZDIGWL60  
**UPC**  
030955183824

### SUPPLIED WITH

Mounting Suction Cups, Mounting brackets, 5m USB cable, Driver CD and User Manual

### PRICE

£85.00



WIRELESS



USB



INTERNET



WINDOWS 8

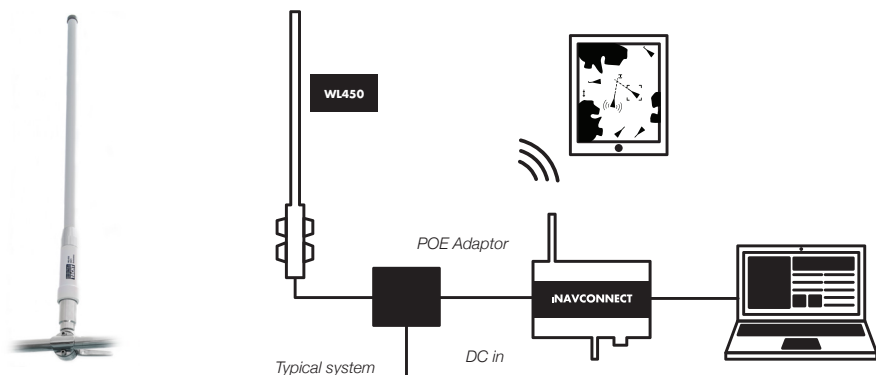


LINUX



MAC

## WL450



“Access the internet through the WL450 hi power wifi antenna with simple network interface and ranges of up to 3NM”

### KEY FEATURES

The WL450 is a smart wifi system with all the electronics encapsulated into its rugged 1m omni-directional antenna. It connects to PC or MAC systems via a simple network connection with power and data carried to the antenna via a thin ethernet cable. A 10m cable is supplied as standard with a 20m option also available. The WL450 is fitted with a standard 1” threaded base so it can mount onto a variety of deck, pole and rail bases available from many 3rd parties. The picture here shows it mounted with a 1” adjustable rail mount.

Wifi hotspots are now common in many ports and marinas – many offer free or very low cost access. However, with the WL450 you’re not tied to local providers with its extended range capability and far more reliable operation than using a normal internal wifi card on a notebook. Once you have wifi access, the web can bring a plethora of useful information to your boat including TV and entertainment, media, weather, navigation updates, tracking, electronic charting, email etc.

With a network interface, there are no complicated drivers or software to install. Simply enter the IP address of the antenna into any browser and you can access and adjust all the WL450 features and parameters.

Scan for available hotspots, choose the best and click to connect. The power output and sensitivity for the system can also be adjusted. The interface is password protected.

Range is dependent upon many local conditions but reliable distances of up to 3NM are possible with this system.

The WL450 is also compatible with our iNavConnect and iNavHub routers allowing the wifi connection to be shared across multiple users.

### SPECIFICATIONS

- 1m long smart wifi antenna
- Tough GRP design
- Omni-directional performance
- Ranges up to 3NM
- Easy browser interface
- MAC, Linux and PC ready
- Plug ‘n play LAN network connection
- Single cable for power and data
- Optional router
- Fits standard 1 inch mounts

*20m cable option also available  
(ZDIGWL450-20)*

### DIMENSIONS

1000mm  
(H)

### PART NUMBER

ZDIGWL450  
ZDIGWL450-20  
**UPC**  
081159830069

### SUPPLIED WITH

WL450 antenna, power over ethernet  
(POE) DC adaptor and 10m cable  
(20m cable option)

### PRICE

£ 365.00  
£ 395.00



WIRELESS



NETWORK



INTERNET



WINDOWS 8

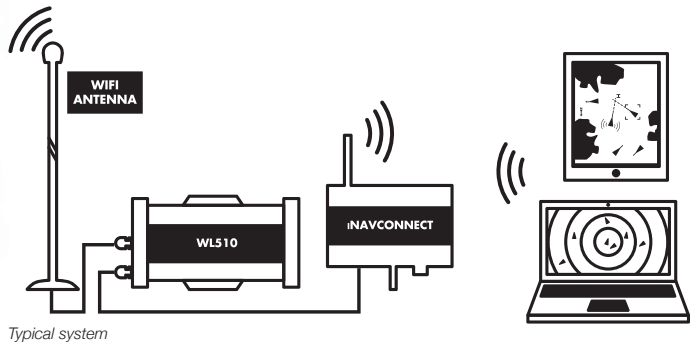
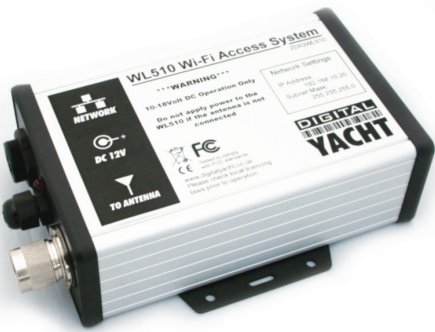


LINUX



MAC

## WL510 HI-POWER WI-FI SYSTEM



*“Flagship hi power wifi connection system with ranges of 4-6NM. Features network interface for router compatibility and easy direct connection with browser interface”*

### KEY FEATURES

The new WL510 allows boat owners to connect to Wi-Fi hot spots so that their on board PC's or equipment can connect to the internet. With internet connectivity on board you can download the latest weather or chart updates as well as having a mobile office on board. Most harbours and ports have either free or subscription based services available.

The system has a compact, DC powered below deck mounted 600mW booster/modem and external, hi-gain (12dBm) antenna with 10m (33ft) low loss LMR400 coax interconnect cable. The antenna measures 0.9m (2.95ft) and can be supplied with deck, mast and industry standard 1" x 14TPI mountings.

The WL510 modem connects to an on board PC through a regular RJ45 CAT5 network cable for simple driver free installation. Connect the WL510 to a router and everyone on board can share the long range wireless internet connection. Compatible with all popular operating systems; Windows XP/Vista/7, Mac OS X 10.3 (and higher) and LINUX, the WL510 supports 802.11b/g protocols as well as WEP/WPA/WPA2 encryption.

Wi-Fi range depends on many local factors, but Digital Yacht has seen ranges of up to 4-6 miles with this low cost system. In general, using an internal Wi-Fi adaptor typically found on a notebook, you'll be lucky to find the signal at the end of the dock, so if you plan to access the internet whilst on board, the WL510 could be the solution for you.

### SPECIFICATIONS

- Ideal solution for permanent installation and new builds
- Network Interface for connection to one PC or to a Router for shared long range connection
- Easy to setup and control from any browser through web based interface
- Adjustable (up to 600mW) Wi-Fi modem and high gain (12dBm) omni-directional antenna gives ERP up to 4W
- Supplied with threaded deck mount for antenna and 10m of low loss LMR400 coax cable
- Supplied with 1m network cable - can be extended with any CAT5 network cable (up to 50m)
- Requires connection to boats 12v DC supply
- No drivers – works with all popular operating systems; Windows XP/Vista/7/8, Mac OS X and LINUX compatible

*Optional WL510-20 unit available with 20m cable.*

### DIMENSIONS

170mm x 107mm x 55mm  
(L x W x H)  
Antenna: 895mm (H)

### PART NUMBER

ZDIGWL510  
**UPC**  
738435472603

### SUPPLIED WITH

1m network cable, 10m Coax  
Cable, Antenna, Base Mount and  
User Manual

### PRICE

£475.00



WIRELESS



NETWORK



INTERNET



WINDOWS 8



LINUX



MAC

## iNAVCONNECT WIFI ROUTER



*iNavConnect acts as a perfect wifi gateway for Fusion 700 series audio systems and their iPhone app – seamless wifi control of your boat's stereo system from an iPhone or iPad*

*“The perfect router for afloat with DC power, slick interface and support for multiple users. Supports Raymarine Navionics app data transfer and Fusion marine stereo remote control apps”*

### KEY FEATURES

iNavConnect is an all in one solution for setting up a wireless network on your boat. With direct connection to the boat's 12v or 24v DC, higher gain 5dB antenna and a rugged IP54 black box, iNavConnect can be easily fitted to any vessel.

Pre-configured and optimised for connection to a Raymarine E Series network, iNavConnect also makes it very easy to setup wireless Waypoint and Route transfer using the “Plotter Sync” function in the Navionics iPhone/iPad App. With iNavConnect installed, waypoints and routes can be instantly transferred between the iPhone/iPad and your Raymarine E Series plotter.

Full integration with Digital Yacht's latest WL510 long range Wi-Fi adaptor is also possible. Simply plug the WL510 in to the dedicated network socket and when you arrive in port and connect the WL510 to the marina's hotspot, everyone on board will be able to share the long range internet connection.

### SPECIFICATIONS

- 12/24v DC Powered Wireless Router
- Pre-configured and optimised for connection to Raymarine E Series network
- Allows Navionics “Plotter Sync” feature to wirelessly transfer routes and waypoints to E series plotter
- Integrates with Digital Yacht's latest WL510 long range Wi-Fi Adaptor
- When connected to WL510, will allow the long range internet connection to be shared with everyone on board
- Creates an 802.11n wireless network onboard with full WEP/WPA/WPA2 encrypted password protection
- 5dB detachable antenna
- Easy to install IP54 black box solution

### EXTRA APPLICATIONS



*Older generation Raymarine E series can utilise iNavConnect to transfer waypoints and routes to and from a iPhone/iPad equipped with the popular Navionics charting app*

### DIMENSIONS

244mm x 150mm x 60.5mm  
(L x W x D)

### PART NUMBER

ZDIGINC  
**UPC**  
030955183640

### SUPPLIED WITH

1m Power cable, 1m Network Cable, Wifi Antenna and User Manual

### PRICE

£150.00

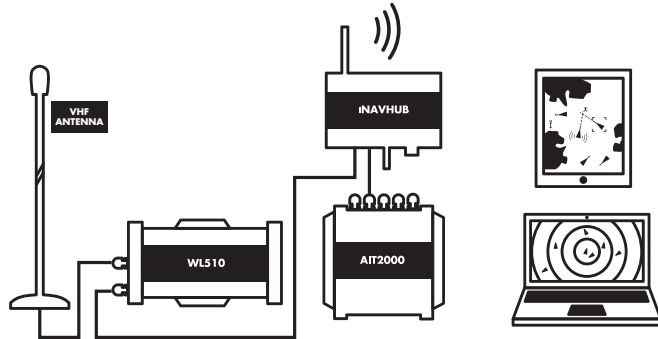


WIRELESS



NETWORK

## iNAVHUB WIFI ROUTER AND NMEA WIFI SERVER



Typical system

“Your on board wireless hub with NMEA interface for navigation systems and WAN interface for internet access devices such as our WL510. Step on board and connect and you’ll have one network with all your data”

### KEY FEATURES

iNAVHub combines wireless networking and wireless NMEA data transfer in one simple to install box. Similar to our popular iNav-Connect product, it creates a wireless network onboard the boat that any wireless device can connect to.

Once connected, iPhones, iPads, PCs and Macs, can receive NMEA0183 data wirelessly for use in iNavX and other navigation apps, whilst also sharing the long range internet connection created by Digital Yacht’s WL510 product.

iNAVHub is designed to fully integrate with Digital Yacht’s latest WL510 long range Wi-Fi adaptor. Simply plug the WL510 into the dedicated network socket and when you arrive in port and connect the WL510 to the marina’s hotspot, and everyone on board will be able to share the long range internet connection.

### SPECIFICATIONS

- 12/24v DC Powered Wireless Hub
- All-in-one solution for distributing your wireless internet and NMEA data
- Integrates with Digital Yacht’s latest WL510 long range Wi-Fi Adaptor
- When connected to WL510, will allow the long range internet connection to be shared with everyone on board
- Includes an NMEA interface that outputs NMEA0183 data wirelessly to multiple iPhones, iPads, PCs, etc. via UDP
- Creates an 802.11n wireless network onboard with full WEP/WPA/WPA2 encrypted password protection
- 5dB detachable antenna
- Easy to install IP54 black box solution

### EXTRA APPLICATIONS



iNAVHub is the perfect partner to iNavX

### DIMENSIONS

244mm x 150mm x 60.5mm  
(L x W x D)

### PART NUMBER

ZDIGINH  
**UPC**  
030955183855

### SUPPLIED WITH

1m Power cable, 1m Network Cable, Wifi Antenna and user Manual

### PRICE

£300.00



WIRELESS



NETWORK



INTERFACE

## AQUA 2 STANDARD PC



*“Stunning performance from this solid state marine PC – ideal for charting, monitoring of office applications aboard. Easy navigation hook up with dual NMEA ports and ultra-low current consumption”*

### KEY FEATURES

Aqua Standard is designed as a general purpose, great value on board PC. With two NMEA ports, a 64GB solid state hard drive, 4 GB of RAM and a CD/DVD RW drive. Standard connections include four USB ports, a VGA and HDMI port allowing the system to drive up to two compatible LCD monitors and all the standard system connectors for keyboard, audio and network.

Featuring the latest ultra low power, fanless, Intel Atom N2800 processor (6.5W) the complete Aqua PC system typically consumes around 12W, but provides all of the PC performance you need to run your navigation software, e-mail, surf the web etc.

All Aqua PCs are supplied with Windows 8 (32bit) and feature high efficiency DC-DC converters that allow them to be connected directly to the boat's 12v DC supply with no inverter.

The Aqua Standard PC can be supplied with optional built-in Hi-Power Wi-Fi adaptor or built-in NMEA 2000 gateway.

### SPECIFICATIONS

- 12v DC powered, ultra rugged marine PC
- Fanless design and solid state hard drive, provide totally silent and reliable operation
- Compact - measures just 30cm x 27cm x 7cm!
- Ultra low power consumption Intel Atom N2800 processor for low power consumption and fast computing
- Supplied with Windows 8 home premium operating system (on UK versions)
- 2 x NMEA Ports and 4 x USB Ports (2xUSB3)
- Easy mounting and installation
- Fitted with CD/DVD RW
- 64GB solid state hard drive

### DIMENSIONS

300mm x 270mm x 70mm  
(L x W x H)

### PART NUMBER

ZDIGAQU200  
**UPC**  
030955183794

### SUPPLIED WITH

0.75m Power/IO cable, Bulkhead mounting brackets, Windows 8 DVD

### PRICE

£695.00



DVD



WINDOWS 8



SOLID STATE DRIVE



USB



INTERFACE



NETWORK



LOW POWER

# MARINE PC SYSTEMS

## AQUANAV 2 PC



*"With built in AIS and GPS sensors, AquaNav is the perfect choice for an on board navigation PC"*

### KEY FEATURES

The AquaNav PC is designed as a powerful marine navigation PC, with two NMEA ports, a super fast 64GB solid state hard drive, 4 GB of RAM, built-in dual channel AIS receiver, dedicated GPS Antenna and a CD/DVD RW drive. Standard connections include four USB ports, a VGA and HDMI port allowing the system to drive up to two compatible LCD monitors and all the standard system connectors for keyboard, audio and network.

Featuring the latest ultra-low-power Intel Atom N2800 processor (6.5W) the complete Aqua PC system typically consumes around 12W but provides all of the PC performance you need to run your navigation software, e-mail, surf the web, etc.

All Aqua PCs are supplied with Windows 8 (32bit) and feature high efficiency DC-DC converters that allow them to be connected directly to the boat's 12v DC supply with no inverter.

The AquaNav PC can be supplied with an optional built-in Hi-Power Wi-Fi Adaptor or built-in NMEA 2000 gateway.

### SPECIFICATIONS

- 12v DC powered, ultra rugged marine PC
- Fanless design and solid state hard drive, provide totally silent and reliable operation
- Built-In dual channel high sensitivity AIS receiver
- Supplied with smart GPS antenna that connects on dedicated IO cable
- Pre-configured and interfaced so GPS and AIS work straight out of the box
- Compact - measures just 30cm x 27cm x 7cm
- Ultra low power consumption Intel Atom N2800 processor for low power consumption and fast computing
- Supplied with Windows 8 home premium 32bit operating system (on UK versions)
- 2 x NMEA ports and 4 x USB ports (2xUSB3)
- Easy mounting and installation
- Fitted with CD/DVD RW
- 64GB solid state hard drive

### DIMENSIONS

300mm x 270mm x 70mm  
(L x W x H)

### PART NUMBER

ZDIGAQU200N  
**UPC**  
030955183800

### SUPPLIED WITH

0.75m Power/IO cable, 0.75m  
Navigation IO cable, Bulkhead  
mounting brackets, GPS Smart  
Antenna, Windows 8 DVD

### PRICE

£900.00



DVD



WINDOWS 8



SOLID STATE  
DRIVE



USB



INTERFACE



NETWORK



LOW POWER



GPS



AIS

## AQUAPRO 2 PC



*“Ideal for use with power hungry 3D charting and bathymetric software. Superfast performance”*

### KEY FEATURES

The new Aqua range of marine PCs from Digital Yacht bring affordable low power computing to every boat. All models utilise the latest generation of Intel or AMD processors and a highly efficient DC power supply to offer exceptionally low power consumption as well as ultra fast computing capabilities, especially on our latest AquaPro 2 model, built around the AMD A6-3500 processor.

AquaPro is designed specifically for high speed, demanding 3D charting and bathymetric applications and has been successfully tested on the latest MaxSea TimeZero technology. It utilises the latest AMD Fusion APU technology and for exceptional performance. It's supplied with 8GB RAM, 6 USB ports (including 2 x USB3.0), Windows 8 (64 bit) as standard and can also be fitted with an internal 4 port isolated NMEA interface with built in multiplexing functions. This allows complex NMEA systems to be integrated into the PC. A 64GB solid state hard drive is supplied as standard and an 802.11n wireless adaptor for easy networking.

When not being used for navigation, it also features a DVD/CD drive, 1080P HDMI output and Dolby 7.1 surround sound for excellent media playback of DVDs and music.

### SPECIFICATIONS

- 12/24v DC powered, ultra rugged marine PC
- Latest AMD A6-3500 processor for exceptionally fast processing speeds
- Integral Radeon HD65XX graphics for fast 3D performance on MaxSea TimeZero
- 8GB RAM
- Compact - measures just 30cm x 27cm x 7cm!
- Low power consumption with remote turn on/reset capability and auto shut down
- Supplied with Windows 8 64 bit Home Premium operating system (on UK versions)
- 6 x USB Ports
- Easy mounting and installation
- 64GB solid state hard drive

### DIMENSIONS

300mm x 270mm x 70mm  
(L x W x H)

### PART NUMBER

ZDIGAQU100P  
**UPC**  
738435472498

### SUPPLIED WITH

0.75m Power, Bulkhead mounting brackets, Windows 8 DVD, Driver CD and User Manual

### PRICE

£1,200.00



DVD



WINDOWS 8



SOLID STATE  
DRIVE



USB



NETWORK



# MARINE PC SYSTEMS

## AQUA ADAPT PC & INTERFACE OPTIONS



Aqua Adapt PC



Aqua Adapt Navigation Interface



Aqua Adapt Communication Interface

*“Powerful modular marine PC system for navigation, communication and entertainment applications on board”*

### KEY FEATURES

Aqua Adapt is a new modular PC system designed to optimise PC integration into onboard navigation, communication and entertainment systems. It's based around a central PC processor utilising a powerful Intel i3 core with 8GB RAM and a 64GB solid state drive. Its fanless design makes for totally silent, super reliable operation. What's more it only consumes around 20W of power. The Adapt series is designed to connect direct to the boat's DC battery system and operates from 8–19v DC. It ships as standard with Windows 8 64 bit preloaded and has built in 802.11 b/g/n WIFI and a wired 1GB network port

Aqua Adapt's modular approach makes integration easy. The Adapt Navigation interface incorporates a certified NMEA 2000 interface as well as a dual channel NMEA 0183 interface (4800/38400 baud) allowing quick and easy integration into onboard NMEA networks. It's also fully compatible with our Navionic's based SmarterTrack 2014 software so expanding an on board navigation system and taking advantage of powerful PC features has never been easier.

Also available is the Aqua Adapt Communication interface which

incorporates a high power wifi internet access system and is supplied with 15dBI external wifi antenna and 10m LMR400 cable. This system add on allows internet access afloat via wifi hotspots and can offer ranges of up to 5NM depending upon conditions and the hotspot capability. It connects to the Aqua Adapt processor via a simple RJ45 network connection.

### INTERNAL WIFI

The internal wifi card of the Adapt PC can be configured to act as a server for remote display application such as Splashtop. This allows a tablet or iPad to act as a wireless remote display for the PC. It can also act as a wifi router for the Adapt AD30 Communications interface allowing multiple users to share the internet connection.

### BRING OUT NETWORK CONNECTIONS USING OUR PANEL MOUNT RJ45 CONNECTOR

This neat panel mount connector is ideal for network connections at the chart table or even throughout the boat. It fits quickly and neatly into a 25mm hole and is ideal for data, network and voice RJ45 connections. They make networking a boat with cat 5 cabling a simple reality.



RJ45 panel mount connector  
X500.088

### DIMENSIONS

170mm x 110mm x 65mm  
(L x W x H)

### SUPPLIED WITH

Windows 8 pre loaded

### UPC

Adapt PC  
081159830144  
Adapt Navigation Interface  
081159830151  
Adapt Communication Interface  
081159830168

### PART NUMBER

ZDIGAQUAD  
ZDIGAQUAD20  
ZDIGAQUAD30

### PRICE

£895.00  
£375.00  
£495.00



WINDOWS 8



SOLID STATE  
DRIVE



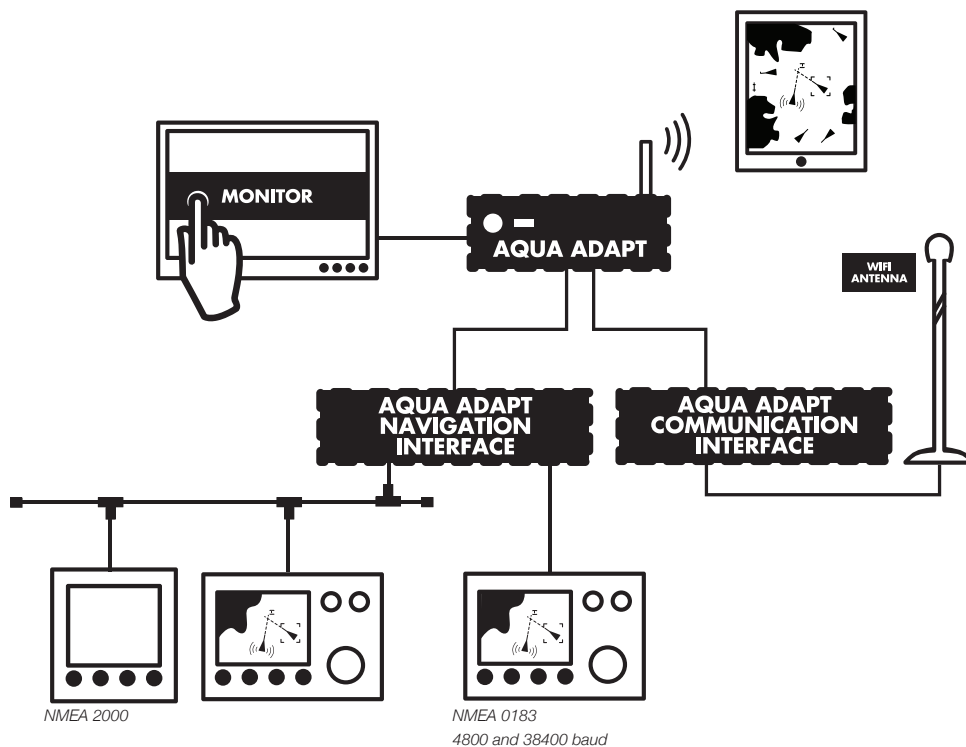
USB



NETWORK



LOW POWER



Typical system

## SPECIFICATIONS

### AQUA ADAPT PROCESSOR

- Modular powerful PC system – ideal for on board navigation, communication and entertainment applications
- Comprises central PC processor with additional modules incorporating on board interfaces
- Fanless design for excellent reliability
- 8-19v DC input, approx 20W power consumption
- Powerful Intel i3 processor with HD4000 graphics
- 8GB DDR3 1600MHz SO-DIMM memory and super fast 64GB solid state drive
- Dual HDMI video out for two independent monitors
- Integrated 802.11 B/G/N wifi
- 3 x USB ports
- Windows 8 64 bit operating system
- Just 170mm x 110mm x 65mm

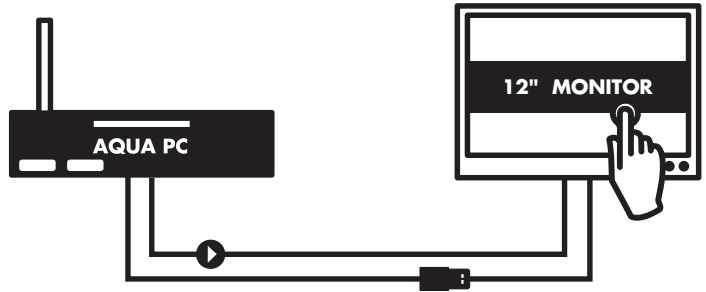
### AQUA ADAPT NAVIGATION INTERFACE

- Integrates Aqua Adapt into on board NMEA 2000 systems
- Provides certified NMEA 2000 to Aqua Adapt processor interface via USB
- Also features dual NMEA 0183 interface (4800 and 38400 baud compatible) to Aqua Adapt processor
- Fully compatible with SmarterTrack 2014
- 8-19v DC input

### AQUA ADAPT COMMUNICATION INTERFACE

- Hi power wifi internet access for the Aqua Adapt
- Connects via supplied LAN network cable
- Supplied with 10m LMR400 antenna cable (20m option)
- Supplied with 1m 15dBi high gain wifi antenna and base
- Offers internet wifi connectivity up to 5NM depending upon conditions
- 8-19v DC input

**T112 12" TOUCH SCREEN LCD MONITOR**



Typical system

Touch screen LCD DC powered monitor for use with PC and plotter systems

**KEY FEATURES**

The T112 is a 12" 1024 x 768 pixel touch screen LCD display. It's designed for mounting below deck at the chart table or operating console and supports a VGA and DVI input. By using a resistive touchscreen (Compatible with Windows XP, Vista, 7 and 8) you can operate the display with wet hands, gloves, stylus or fingers. Unlike most 12" displays, it supports a native resolution of 1024 x 768 pixels which is required for optimised e-chart viewing. Brightness is 400cd/nits. It also has a wide viewing angle and is powered directly from the boats DC supply.

It also has three momentary switches of the front panel which link to a rear connector. These can be used for remote boot and reset of a PC or as an AIS transponder silence feature. The T112 is therefore an ideal navigation monitor. Optimal mounting is flush into a panel but the monitor also has a standard VESA back for mounting onto a variety of stands or wall brackets.

**SPECIFICATIONS**

- Tough and reliable
- 1024 x 768 pixel resolution, ideal for displaying complex graphics and high definition images.
- All kinds of touch input devices can be activate the screen, including fingers, fingernails, styluses, gloved hands, and credit cards.
- Plug and play compatibility
- Advances OSD (on Screen Display) controls for picture quality adjustment
- Extra On-Screen buttons to AIS enable easy power control of the CPU, CPU restart and silencing.
- Offers standard video interfaces for input sources from PC or multimedia system: VGA-in, DVI
- Panel Mounting, wall mounting and desktop stand options.

**DIMENSIONS**

340 x 260 x 46.5  
(W x H x L)

**PART NUMBER**

ZDIGT112

**UPC**

081159830083

**SUPPLIED WITH**

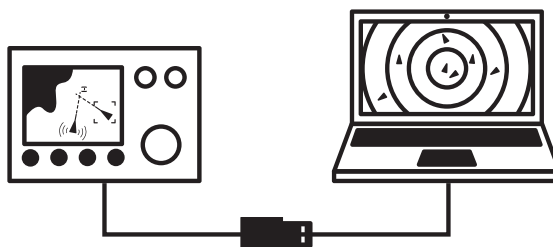
Supplied with USB touch screen driver cable, VGA lead

**PRICE**

£ 595.00



## USB TO NMEA ADAPTOR



Typical system

*“Get NMEA data into your PC or MAC with this super stable interface”*

### KEY FEATURES

The NMEA to USB Adaptor works on PCs, Macs and Linux computers, and converts NMEA 0183 data, used by many marine systems, into a USB format that can be plugged into most modern computers.

The adaptor is a bi-directional device so data can be sent to and from systems and supports traditional 4800 baud data or the higher speed 38400 baud rate used by AIS systems. LEDs show data being received and transmitted which helps with interfacing issues and all the electronics are encapsulated into the connector. The device creates a virtual COM port on the PC which navigation and charting software can use to read NMEA data. Multiple adaptors can be connected if necessary which effectively allow any number of NMEA ports to be created on your PC.

The device ships with a multi platform driver CD so it can be used on PCs, MACs and even Linux based systems. If you're using the device with an AIS, you'll get a bonus as SmarterTrack Lite AIS viewing software is included on the CD - effectively turning your PC into an AIS target display.

### SPECIFICATIONS

- Converts NMEA0183 into USB so that your computer can read the data
- Bidirectional data conversion
- Use with our GPS150 for PC integration
- Low cost simple solution
- More than one adaptor can be fitted to the computer
- 4800, 9600, 38400 and 115200 baud compatible
- Built-in indicator lights flash to show data is being received and transmitted
- Easy plug and play connection to most computers
- Comes with a driver CD and a free copy of SmarterTrack Lite AIS software

### DIMENSIONS

1.8m cable

### PART NUMBER

ZDIGUSBNMEA

### UPC

030955183671

### SUPPLIED WITH

1.8m Cable, Manual and CD

### PRICE

£35.00



USB



INTERFACE



WINDOWS 8



LINUX



MAC

**SMARTERTRACK LITE SOFTWARE**



*“Supplied free with our AIS systems, this is a great PC viewer for AIS systems”*

**KEY FEATURES**

SmarterTrack LITE is a simple, but effective graphical AIS display program for PCs. The data collected by AIS units is meaningless without some sort of graphical display that shows where the AIS targets are in the real world, relative to your vessel.

SmarterTrack LITE does just this by plotting all surrounding AIS targets on a world map or, as you zoom in, on a blank radar type screen with variable range rings.

Designed to give customers an immediate taste of what AIS is all about, SmarterTrack LITE can then be upgraded to the full version as and when required.

AIS support includes; colour coded targets, user selectable labelling of targets, target course lines and fast AIS Information recovery, making it the ideal introduction to AIS software on the market. SmarterTrack LITE can be used on any PC running a Windows XP/ Vista/7/8 operating system.

**SPECIFICATIONS**

- Simple graphical AIS display software for PCs
- Plots all detected AIS targets on world map
- Automatically switches to AIS “Radar” type display as you zoom in
- Colour coded AIS Targets with course lines
- Each AIS target shown with user selectable label
- Allows easy programming of Class A Transponder voyage data
- Will display wireless NMEA 0183 data from Digital Yacht’s iAIS, WLN10 and Boatranet products
- Can be upgraded to full SmarterTrack package

**DIMENSIONS**

N/A

**PART NUMBER**

ZDIGSTLTE

**UPC**

N/A

**SUPPLIED WITH**

Installation CD-ROM and manual

**PRICE**

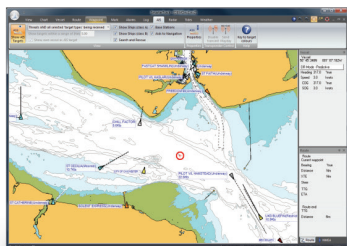
£50.00

(Free with all AIS and AquaPC units)

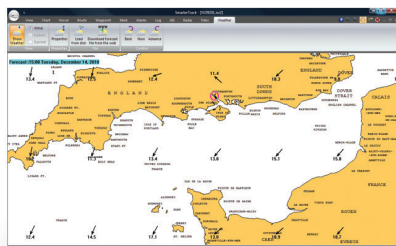


WINDOWS 8

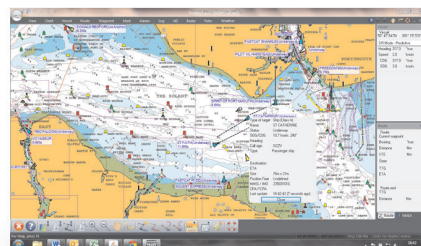
## SMARTERTRACK 2014 SOFTWARE



Navionics charting



Weather overlay



Sophisticated AIS overlay

*“Easy to use PC navigation software compatible with Navionics charts. Powerful features and AIS enhanced displays”*

### KEY FEATURES

SmarterTrack is the ideal PC navigation software for anyone who has a dedicated chart plotter that uses Navionics Gold and Platinum chart cartridges or who is new to electronic charting and wants simple to use PC navigation software with good AIS support.

Planning at home, monitoring from the chart table or as a self contained independent backup system, SmarterTrack turns your PC in to an invaluable navigation tool that will display your GPS position and the location of all the surrounding AIS targets on the accurate and detailed Navionics electronic charts.

AIS support includes; colour coded targets, user selectable labelling of targets, fully configurable CPA and TCPA alarms, visual indication of CPA, AIS targets drawn to scale and many other other settings and features that make this software ideal for displaying AIS data. Entering the route you wish to sail, checking the tides, overlaying weather (GRIB files), confirming depths or nav-aids on the chart and a whole host of other routine navigational tasks can be performed simply and effortlessly with SmarterTrack. SmarterTrack now also supports Navionics’s Sonar charts which give highly detailed sub-sea information and additional depth

contours generated from user supplied local data. SmarterTrack can also utilise the internal wifi adaptor on Aqua PCs to support apps like Splashtop which allow remote display mirroring on iPads and tablets – perfect as a 2nd station display. On this latest version, Navionics’s charts can be copied to the PC hard drive allowing charts to be shared between plotter and PC with no additional costs. Navionics’s charts are widely used by Lowrance, Raymarine, Simrad, B&G and Humminbird plotters so SmarterTrack makes an ideal partner to an on board plotter.

### SPECIFICATIONS

- Simple yet powerful PC Navigation software
- Supports Navionics’s Gold or Platinum chart cartridges – NOTE ONLY charting features supported not 3D capability of Platinum
- Now compatible with Navionics Smart Charts
- Excellent AIS support
- Full set of configurable alarms
- Displays tidal height and tidal flow data
- Optimum departure time capability from tidal data
- All route and waypoint data created on SmarterTrack can be transferred to your dedicated chart plotter
- Displays all NMEA 0183 instrument data
- Allows import of downloaded weather GRIB files
- Will display wireless NMEA 0183 data from Digital Yacht’s iAIS, WLN10 and Boatranet products

### DIMENSIONS

N/A

### PART NUMBER

ZDIGSTPCN

### UPC

738435472566

### SUPPLIED WITH

installation CD-ROM

### PRICE

£250.00

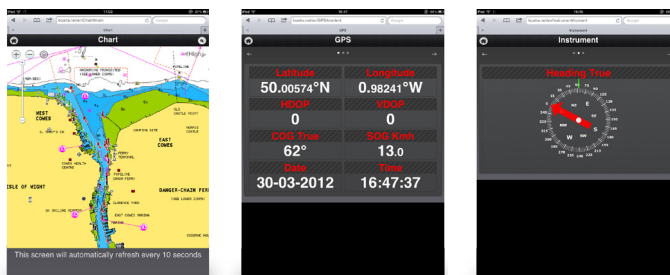


DVD



NAVIONICS

## BOATraNET



Typical browser screen shots

*“On board wireless web server with custom interface. Puts all your boat’s data into a web browser on any mobile device with navigation, charting, documents, media and more”*

## KEY FEATURES

BOATraNET is a truly unique and innovative product that “e-enables” your existing navigation system and creates a dynamic, local intranet for your boat. Imagine having your own automatic website that shows visitors to your boat, all of the most important navigational information and gives them access to the photos, documents and music that you want them to share and enjoy. BOATraNET integrates with the boat’s existing navigation system (Raymarine, Garmin, Furuno, Navico, etc.) via NMEA 0183 and automatically creates animated instrument and navigational displays (web pages) of your data.

It creates a wireless “hotspot” that works with iPhones, iPads, iPod Touch, Android Devices, Smart Phones, Laptops, Windows, LINUX and Mac OS X PCs. Anyone onboard can connect, enter the password you give them, and then using the wireless device’s own web browser (no special app required) view the data, even when out at sea without an internet connection.

BOATraNET incorporates a Navionics based chart plotter (with optional embedded Silver Charts), that shows you where you are on the chart, a music player that can play music on your boat’s hifi or stream music to your wireless devices, plus photo and document viewers that you control from your wireless device’s web browser. Connect BOATraNET to one of Digital Yacht’s long range wifi adaptors and when you are in the marina, you can easily connect to the marina’s “hot spot” and share the long range wifi connection, with everyone connected to BOATraNET.

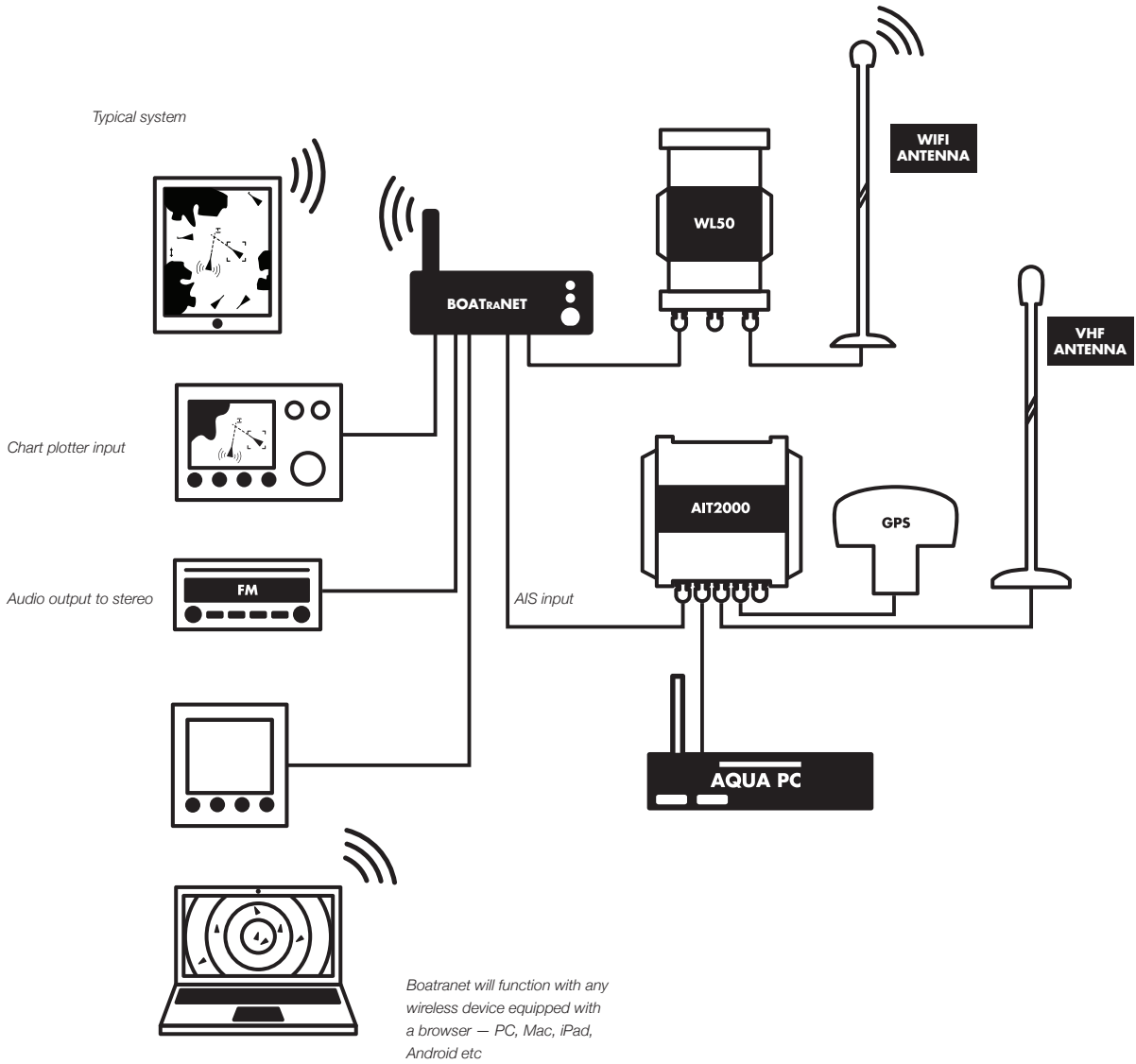
*Continued overleaf*

BOATraNET is fully expandable and more functions, features and accessories are planned to be rolled out over the coming months. Software updates, data and media files can easily be transferred via USB memory sticks.

## SPECIFICATIONS

- World’s first wireless navigation server for boats
- Creates dynamic HTML 5 compliant web pages that can be accessed by anyone on the boat
- New and exciting method for family and friends to access data and media whilst onboard
- Can be accessed by any wireless device with a modern browser – no special apps required
- Works everywhere at sea – no internet connection required
- Optional long range wifi adaptor for shared internet connection in marinas (WL510)
- 12/24v DC, ultra rugged, fanless hardware that consumes just 1A
- Compact - measures just 29.5cm x 22.5cm x 6.2cm
- 2 x NMEA 0183 Ports
- Easy mounting and installation
- All units include a worldwide Base Map
- Can be supplied with optional Navionics Silver continental chart coverage of your region

Typical system



## DIMENSIONS

295mm x 225mm x 62mm

(L x W x H)

## SUPPLIED WITH

1m Power/IO cable, Mounting brackets, Wifi Antenna and User Manual

## PART NUMBER

ZDIGBNET

ZDIGBNET-EU

ZDIGBNET-US

ZDIGBNET-CAN

ZDIGBNET-ROW

## UPC

738435472511

081159830021

081159830038

081159830052

081159830045

## PRICES

£ 600.00

£ 750.00

£ 750.00

£ 750.00

£ 750.00



WIRELESS



INTERFACE



INTERNET



## AIS ACCESSORIES AND GPS ANTENNAS

<b>ZDIGCELVG</b>	CEL-VG COMBINATION VHF/GPS ANTENNA WITH SPLITTER	£275.00
<b>ZDIGCELCX4A</b>	CEL-CX4A 1.26M GRP HIGH QUALITY AIS VHF ANTENNA	£100.00
<b>ZCELE179F</b>	E179F DECK BASE FOR CX4/CEL VG ANTENNAS	£ 35.00
<b>ZCELN280F</b>	N280F ADAPTOR FOR 1" MOUNTS - Allows CX4A and WL510 antenna to fit to standard 1" format deck and rail mounts	£ 35.00
<b>X500.391</b>	MA800 GPS ANTENNA (FITS 1 X 14tpi MOUNT) FOR AIT250/1000/2000 SERIES TRANSPONDERS	£70.00
<b>ZCELR225F</b>	R225F LOW PROFILE GPS ANTENNA WITH 7.5M CABLE	£100.00

## WL SERIES WIFI ANTENNAS ACCESSORIES

<b>ZDIGWLEXT</b>	POWERED USB EXTENSION CABLE (5M) FOR WL50/400	£ 26.00
<b>X400.073</b>	10M CABLE KIT FOR WL510 (Supplied as standard)	£100.00
<b>X400.083</b>	20M CABLE KIT FOR WL510	£200.00
<b>ZDIGWL500UP</b>	WL500-510 UPGRADE KIT	£295.00
<b>ZCELE179F</b>	E179F DECK BASE FOR CX4/CEL VG ANTENNAS (SUPPLIED AS STANDARD WITH WL510)	£35.00
<b>ZCELN280F</b>	N280F ADAPTOR FOR 1" MOUNTS - Allows CX4A and WL510 antenna to fit to standard 1" format deck and rail mounts	£35.00

## AQUA PC ACCESSORIES AND UPGRADES

<b>ZDIGKB05</b>	USB WIRED COMPACT KEYBOARD WITH HUB	£25.00
<b>ZDIGKB20</b>	USB RF WIRELESS KEYBOARD AND MOUSE	£40.00
<b>ZDIGUSBNMEA</b>	USB-NMEA SERIAL ADAPTOR CABLE AND AIS S/W PACK	£35.00
<b>ZDIG128UP</b>	128GB SOLID STATE HARD DRIVE UPGRADE FOR AQUA STD/ NAV/PRO (FROM 64GB)	£130.00
<b>ZDLIDBT120</b>	BLUETOOTH DONGLE (included with AquaMedia system)	£18.00
<b>ZDIGN2KM</b>	NMEA 2000 MODULE	£145.00
<b>ZDIGNMUP</b>	4 PORT NMEA INTERFACE FOR AQUAPRO	£210.00
<b>X500.088</b>	RJ45 PANEL MOUNT CONNECTOR	£ 8.00

## WINDOWS UPGRADES

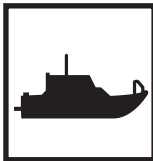
<b>ZDIGWIN8PRO</b>	WINDOWS 8 PRO	£90.00
--------------------	---------------	--------

# DIGITAL DEEP SEA

**DIGITAL DEEP SEA PRODUCTS ARE DESIGNED FOR THE PROFESSIONAL MARKET INCLUDING COMMERCIAL SHIPPING, FISHING, WORKBOAT, SUPER YACHT AND NAVAL APPLICATIONS. THEY'RE BUILT TOUGH FOR A DEMANDING ENVIRONMENT YET SHARE THE SAME INNOVATIVE DESIGNS AND GREAT VALUE OFFERED BY OUR LEISURE PRODUCTS. PRODUCTS SUCH AS OUR CLA1000 CLASS A AIS AND OUR AIS SART ALSO CARRY WHEELMARK IMO COMPLIANCE FOR MANDATED INSTALLATIONS. OUR AQUA PC PRODUCTS CAN ALSO FIND A PLACE ABOARD ANY COMMERCIAL INSTALLATION AND BRING PC BENEFITS TO THE HIGH SEAS.**



SUPERYACHT



WORK BOAT



COMMERCIAL  
FISHING

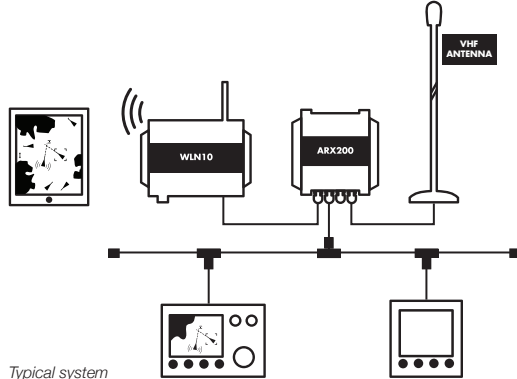


COMMERCIAL  
SHIPPING



NAVAL

**ARX200 AIS RECEIVER**



Typical system

*“Maximum connectivity with NMEA 0183 and NMEA2000 (N2NET) interfacing as well as USB connectivity for a PC. It’s the ultimate AIS receiver. Add wireless connectivity with the optional WLAN10HS”*

**KEY FEATURES**

Our top of the range AIS receiver with Tri-Output connectivity, features the very latest AIS technology, to give un-rivalled levels of reception and data through put. With easy connections to all of the latest PC navigation software and chart plotters, such as the latest Garmin, Raymarine, Navico, Standard Horizon and Furuno units, the AIS200N2NET matches and exceeds the performance of other more expensive, big brand AIS receivers.

With NMEA 2000, dual NMEA 0183 and USB outputs connection, interfacing and installation is simple and the AIS200N2NET supports all of the latest AIS message types including AIS SARTs, AtoNs and base stations.

Connected to existing VHF antenna (via a splitter) or dedicated AIS antenna, you’ll receive all AIS targets within range – typically up to 30nm. Simple plug and play USB connection to a PC, the AIS200N2NET is automatically mapped to an available “virtual” com port, which your PC software can read. Also compatible with Mac OS X and all LINUX Kernels since V2.4.20.

The AIS200N2NET has dual NMEA0183 outputs; one output

provides just AIS data, whilst the other multiplexes AIS data with whatever NMEA 0183 data it receives on the NMEA input (4800 baud). With NMEA 2000 and USB output capability, the AIS200N2NET can provide AIS feeds to multiple equipment at the same time, great for larger more complex installations.

**SPECIFICATIONS**

- Latest generation AIS Technology – featuring a brand new AIS receiver design
- Tri-Output; NMEA2000, NMEA0183 and USB PC
- High performance dual channel AIS receiver for use with existing plotter and radar systems
- Rugged IPX5 aluminium housing
- USB Interface for simple Plug and Play connection to a PC
- Two NMEA 0183 outputs (38,400 baud)
- Requires VHF antenna or dedicated AIS antenna (available as optional accessory) or splitter
- Multiplexed NMEA input for single NMEA GPS+AIS data output at 38,400 baud
- Simple “fit and forget” black box solution

**DIMENSIONS**

150mm x 155mm x 37.5mm  
(L x W x D)

**PART NUMBER**

ZDIGARX200  
**UPC**  
081159830175

**SUPPLIED WITH**

0.75m Power/Data cable, 0.75m USB cable, 0.75m NMEA 2000 cable, AIS Lite software on CD

**PRICE**

£250.00



AIS



USB



INTERFACE



INTERFACE



MULTIPLEXER



INTERFACE



LINUX

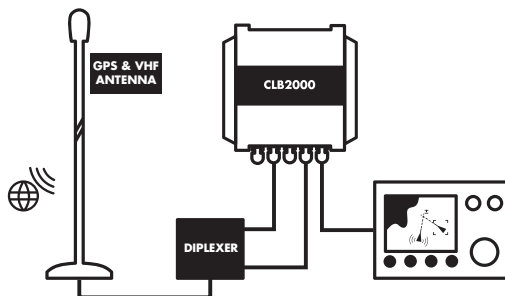


MAC



WINDOWS 8

## CLB2000 CLASS B TRANSPONDER



Typical system

“Class B AIS transponder for non-mandated vessels. The best solution for AIS with a combination GPS/VHF antenna”

### KEY FEATURES

The CLB2000 uses the latest AIS Transponder technology to squeeze more performance and interfacing options in to a housing that is half the size of our previous generation transponder. This ultra-compact Class B Transponder has three outputs; NMEA 0183, NMEA 2000 and USB connection, allowing it to work with every AIS compatible chart plotter or software package on the market today.

Configuration of your vessel's fixed data, such as MMSI, call sign, boat name, dimensions etc. is made easy with the included Windows and Mac compatible proAIS2 software. Once configured, the unit will provide AIS data to a PC or Mac running suitable navigation software or a dedicated chart plotter, such as the latest Garmin, Raymarine, Navico and Furuno units.

The CLB2000 is supplied with an easy to install combination VHF+GPS antenna, that allows one RG58 cable to connect the 1.1m Antenna to the CLB2000, via a splitter that connects directly in to the CLB2000.

As well as transmitting your own vessel's position so that other AIS equipped vessels know where you are, the CLB2000, will receive all AIS targets within range of your boat – typically up to 30NM. Featuring a remote silence button option, two NMEA 0183 Inputs

and Outputs, four status LEDs and rugged vibration-proof mounting brackets, the CLB2000 is the perfect AIS transponder solution for all commercial vessels up to 300 tonnes that are not mandated to fit a Class A.

### SPECIFICATIONS

- Latest generation AIS technology – featuring a brand new AIS transponder (Class B) design
- 12v and 24v Operation
- Ideal for use with existing plotter and radar systems
- Built-in high performance 50 channel GPS receiver (ideal also as a backup GPS)
- USB Interface for simple plug and play connection to a PC or Mac
- High speed NMEA output (38,400 baud) – compatible with industry standard plotters
- Supplied with a 1.1m ultra slim, combination VHF+GPS antenna complete with deck mounting and splitter box with connecting cables to CLB2000 – requires RG214 cable between Antenna and Splitter
- Remote silence function
- Supplied with programming software for user programming
- Easy to install black box solution with integral mounting brackets

*The CLB2000 can also be supplied without the combination GPS-VHF antenna but with a GPS standard antenna. Price is the same as the AIT2000.*

### DIMENSIONS

150mm x 155mm x 37.5mm  
(L x W x D)

### PART NUMBER

ZDIGCLB2000  
**UPC**  
030955183725

### SUPPLIED WITH

0.75m Power/Data cable, 0.75m  
USB cable, 0.75m N2Net cable,  
Combo GPS/VHF Antenna+Splitter

### PRICE

£750.00



TRANSMITTER



AIS



USB



INTERFACE



INTERFACE



INTERFACE



MULTIPLEXER



GPS



WINDOWS 8

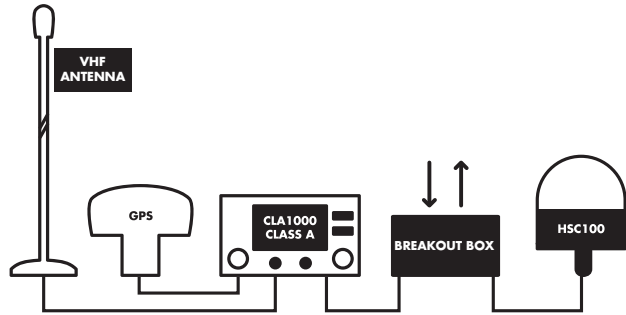


LINUX



MAC

**CLA 1000 CLASS A TRANSPONDER**



Typical system

*“Fully IMO approved, Class A AIS transponder for certified installation on vessels over 300 GRT”*

**KEY FEATURES**

The CLA1000 from Digital Deep Sea is a fully approved, Class A transponder that meets all IMO requirements. Built to the most demanding of standards, the CLA1000 is MED Wheel Marked and comes with a global 2 year warranty.

Normally fitted to larger vessels that are mandated to fit a Class A Transponder due to their size or number of passengers, many smaller non-mandated vessels can also benefit from fitting a Class A transponder. With 12W transmit power, compared to 2W for Class B, many off shore sail boats will benefit from being visible at greater ranges, whilst the faster (up to every 2 seconds) update rate of the Class A transmissions, compared to every 30 seconds with Class B, will definitely benefit larger power boats that can go a long distance in 30 seconds.

Two other important benefits of Class A Transponders are that they take priority over Class B transponders in areas of high AIS traffic (transmission slot allocation is guaranteed for Class A transponders) and they are always displayed on other Class A transponders and ECDIS systems on board large commercial vessels.

Hitting a new price point for Class A Transponders, the CLA1000 is now a realistic consideration for non-mandated vessels that would benefit from fitting a Class A transponder but could not justify the previously high price of this type of device.

**SPECIFICATIONS**

- Fully approved and MED Wheel Marked Class A Transponder
- Ultra Compact Design
- Easy soft key and rotary encoder operation
- Built-in GPS with easy to fit 1” x 14tpi mount GPS antenna
- Pilot Plug for easy PC connection
- Remote break out box for on-board interfacing
- Supplied with configuration software and SmarterTrack Lite AIS software

**DIMENSIONS**

195mm x 105mm x 157mm  
(W x H x D)

**PART NUMBER**

ZDIGCLA  
**UPC**  
738435472573

**SUPPLIED WITH**

GPS Antenna, breakout box, trunnion bracket, flush mount kit, power lead and manual

**PRICE**

£1,795.00



TRANSMITTER



AIS



USB



INTERFACE



MULTIPLEXER

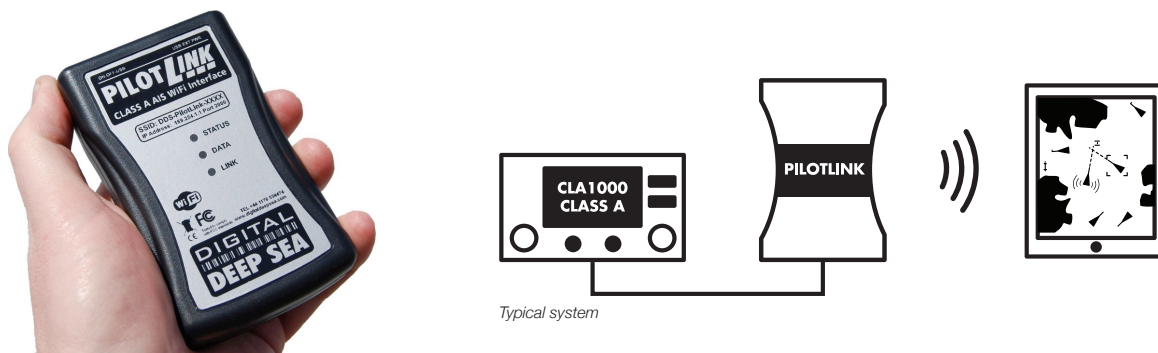


GPS



IMO APPROVED

**PILOTLINK CLASS A AIS WI-FI INTERFACE**



“Connects to the pilot plug interface so iPad, iPhones and other tablets can share the AIS data via a wifi link”

**KEY FEATURES**

PilotLINK is a wireless interface for Class A AIS systems. All Class A transponders share a common “Pilot Plug” connector that Pilot-LINK connects directly to via a 1m cable. PilotLINK then creates a wifi navigation network on board the vessel which allows AIS and GPS data from the Class A to be sent directly to any connected mobile devices such as phones or tablets. It’s compatible with iOS and Android systems (depending upon app utilised) as well as PC & MAC based systems.

PilotLINK is stand alone and can operate from its internal, user replaceable, dry battery (PP3) for up to 15 hours. Alternatively, it can connect via a standard mini USB connector to any USB style power pack or AC/DC USB power adaptor that are readily available from many 3rd parties.

PilotLINK is compatible with a wide variety of apps and PC programs. iAIS is a free of charge app from Digital DeepSea which gives a basic AIS radar type display and target information. It’s also compatible with iSailor and iNavX - both popular charting/ AIS products and many other 3rd party apps available through the Apple App store or Google Play on Android.

PilotLINK can also interface with a PC or MAC. Popular navigation programs such as SmarterTrack, SeaPro, RosePoint and MaxSea for PCs or macENC for a Mac are all compatible. PilotLINK ships with a complimentary copy of SmarterTrack Lite - a full featured AIS display program for Windows PCs.

**SPECIFICATIONS**

- Wireless Interface for Class A AIS Transponders
- Reads GPS and AIS data directly from the transponders Pilot Plug
- Supports bi-directional communication for configuring the transponder
- Uses standard NMEA data for maximum compatibility with software applications
- Free iAIS App for iPhone, iTouch or iPad
- Complimentary copy of SmarterTrack Lite for PCs
- Creates a wireless access point with a typical range of 30m
- Transmits data via TCP/UDP link
- TCP allows single device connection while UDP allows multiple devices to receive the data
- Fully compatible with many popular Apps and software programs
- Rugged handheld design can be fitted with optional rubber jacket
- Powered from internal 9v PP3 battery or optional external USB power source

**DIMENSIONS**

117mm x 70mm x 25mm  
(L x W x D)

**PART NUMBER**

ZDIGPLINK  
**UPC**  
081159829988

**SUPPLIED WITH**

1m Pilot Plug cable, User Manual  
and CD

**PRICE**

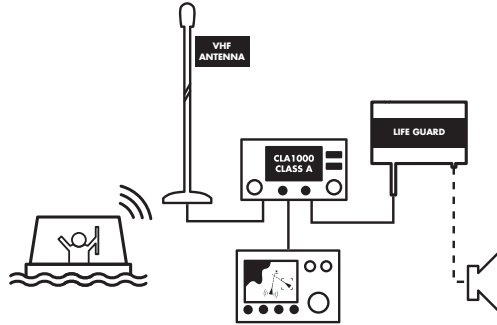
£200.00



AIS

INTERFACE

## S1000 AIS SMART SART



Typical system

*“IMO Compliant AIS SART with the latest technology, performance and great value”*

### KEY FEATURES

A SART (Search and rescue transponder) is a mandatory fit for life saving apparatus on all vessels over 300GRT. Traditional technology used a radar type device, but new legislation allows an AIS SART to be used with associated performance and cost benefits. AIS SARTs positively identify the casualty and give a regular position update which can be graphically displayed on a Class A MKD, ECDIS or plotter.

The S1000 is a fully IMO compliant and approved AIS SART (Wheel Marked) which once activated, will display a target on any Class A or B transponder system or on an AIS receiver. As such it greatly aids recovery of the casualty or liferaft. SART alarms like our AIS Lifeguard are also activated by the signal from these devices.

The S1000 utilises specialist VHF antenna technology to offer exceptional range (typically up to 10NM) and has a battery life of 96 hours under operation. It comes with a storage bag and bracket mount and has a 1m telescopic pole integrated so it can be used in a liferaft. The integrated 50 channel GPS offers a very fast time to first fix (typically under 40 seconds) and thereafter position information is transmitted 8 times per minute. The SART

shows as a SART target on any AIS system and a safety message (SART ACTIVE) is sent every 4 minutes.

The S1000 SART also offers considerable safety benefits for leisure users and should be part of any safety pack for coastal or ocean sailing.

### SPECIFICATIONS

- Full IMO Compliant, Wheel Marked AIS SART
- 50 channel GPS receiver built in
- Specialist VHF antenna technology for superior performance
- LED indications for test and activation
- When activated transmits position 8 times per minute
- 96 hour battery life
- Sends SART ACTIVE safety message every 4 minutes
- Easy to change, low cost battery replacement

### DIMENSIONS

381mm x 67mm  
(H x D)

### PART NUMBER

ZDIGS1000  
**UPC**  
081159829995

### SUPPLIED WITH

Supplied with mounting bracket,  
U Bolts, 10m buoyant lanyard, 1m  
pole mount and storage bag

### PRICE

£400.00

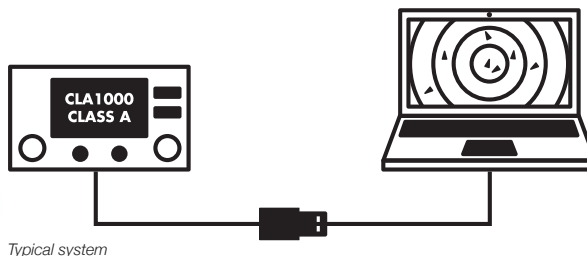


AIS



SAFETY

## PILOT PLUG USB CABLE



“Easy PC connections from a Class A AIS to a PC or MAC”

### KEY FEATURES

All AIS Class A Transponders have a special “Pilot Plug” that is intended to allow a Commercial Pilot to quickly and reliably connect their laptop PC to the Class A Transponder when they arrive onboard.

The Digital Deep Sea Pilot Plug Cable, allows anyone to connect their PC to a Class A Transponder and receive NMEA0183 AIS and GPS data via a USB port. With some models of Class A transponders, this cable can also be used to configure the Class A with static AIS data and/or the mandatory voyage data that should always be programmed in to a Class A transponder before starting a passage.

The NMEA to USB Adaptor works on PCs, Macs and Linux computers, and converts NMEA 0183 data, used by many marine systems, into a USB format that can be plugged into most modern computers.

The adaptor is a bi-directional device so data can be sent to and from systems and has integral LEDs that flash as data is being received (green) and transmitted (red) which helps with interfacing issues. The Pilot Plug Cable creates a virtual COM port on the PC which

navigation and charting software can use to read NMEA data. The device ships with a multi platform driver CD so it can be used on PCs, MACs and even Linux based systems. If you’re using the device with a Windows PC, you’ll get a bonus as SmarterTrack Lite AIS viewing software is included on the CD - effectively turning your PC into an AIS target display.

### SPECIFICATIONS

- 1.8m Cable
- Fully NMEA 0183 compatible (differential RS422)
- Conforms to the IMO SN/Circ.227
- Bidirectional data connection
- Low cost simple solution
- Built-in indicator lights flash to show data is being received and transmitted
- Easy plug and play connection to most computers (Windows/ Mac/LINUX)
- Comes with a driver CD and a free copy of SmarterTrack Lite AIS software

### DIMENSIONS

1.8m cable

### PART NUMBER

ZDIGPPL

### UPC

030955183749

### SUPPLIED WITH

1.8m Cable, Manual and CD

### PRICE

£100.00



AIS



USB



WINDOWS 8



LINUX



MAC



## CLASS A PC PILOT PLUG EXTENSION CABLE



### KEY FEATURES

All AIS Class A Transponders have a special "Pilot Plug" that is intended to allow a Commercial Pilot to quickly and reliably connect their laptop PC to the Class A Transponder when they arrive onboard.

Often on larger vessels the normal 1-2m length of the Pilot Plug can make connecting to the vessels Class A transponder difficult. As most Pilot Plug cables use a USB interface, which is limited to 5m, extending the cable can be problematic.

The Digital Yacht extension cable, extends the NMEA0183 wiring and not the USB wiring making it possible to extend up to 10m (or more) plus the length of the existing Pilot Plug cable.

### SPECIFICATIONS

- 10m Cable
- Conforms to the IMO SN/Circ.227
- Can be used to extend any Pilot Plug
- Allows you to extend the cable without increasing the USB cable length which is limited to 5m

### DIMENSIONS

10m cable

### PART NUMBER

ZDIGPPLEXT

### UPC

081159830182

### SUPPLIED WITH

N/A

### PRICE

£80.00



AIS



---

Tel: 01179 554 474  
www.digitalyacht.co.uk  
Edition 1 | 2014

---

Digital Yacht UK  
The Technology  
Centre  
Failand Farm  
Green Lane  
Failand  
Bristol  
BS8 3TR  
United Kingdom

---

USA  
+1 978 277 1234

Designed and manufactured in



Follow our daily news feed at [www.digitalyacht.net](http://www.digitalyacht.net)